



Krampitz®

CUBIC GOOD

Characteristic	Area of application/Media			Transport/Installation	
E2 Double wall	E12 Hazardous to groundwater	E7 Highly flammable	E10 Heating oil/ Diesel	E4 Filled transportable	E8 Outside installation

The multi-functional, durable transportation and storage tank system for the logistics of the 21st century offers:

- Modern logistics through save transportation, transit and storage of fuels and oils
- Optimal utilization of space through the cubic form, EUR-pallet dimension and stackability for transportation and storage
- All around arranged tension sleeves and lifting eyes ensure the maximal security during transportation, loading and stacking

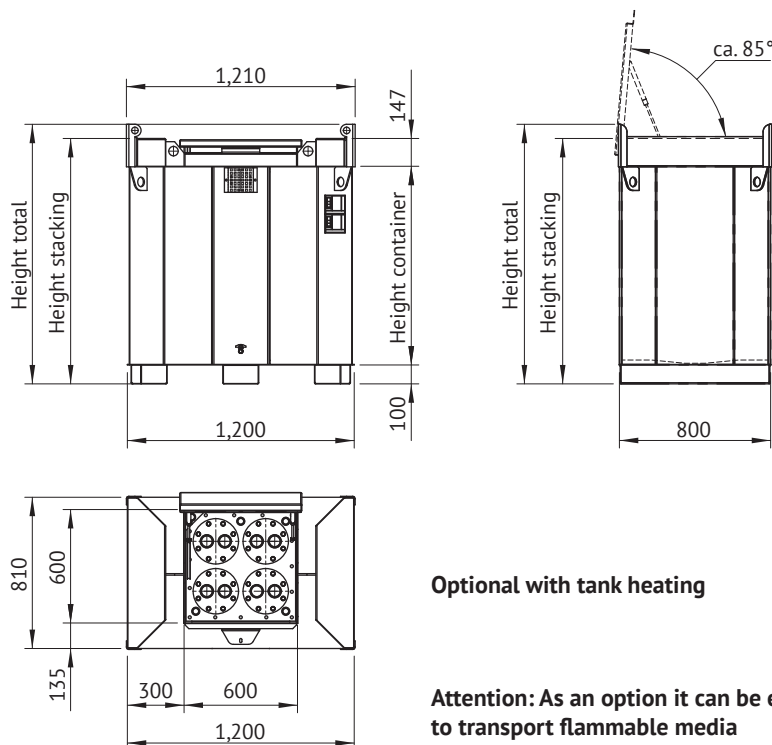
The container sets standard in functionality, usability and security. It is qualified with the certification of an IBC for transporting hazardous goods of the packaging groups II and III and is also qualified with the certification of a storage tank. These components of modern logistics can be used individually or as a tank battery, stationary or transportably. The durable, double wall structure of steel guarantees a long-life cycle and the integrated vacuum leakage indicator guarantees security. The container is the best for the use in logistics companies, the chemical industry, in the mineral oil trade, mechanical engineering and aggregate construction and in the civil protection or in conflict areas.

Type/Art no.	Volume		Length total	Width total	Height container	Height stacking	Height total	Weight empty*	Max. permissible stacking load	Max. gross weight
	100 %	95 %								
	(l)		(mm)	(mm)	(mm)	(mm)	(mm)	(kg)	(kg)	(kg)
CEN-501	530	500	1,210	810	711	786	1,033	295	ca. 2,612	1,230
CEN-751	790	750			1,051	1,126	1,373	360		1,754
CEN-951	992	950			1,326	1,401	1,648	434		2,184

Please note: Max. density of the filling goods is 1.8 kg/L.

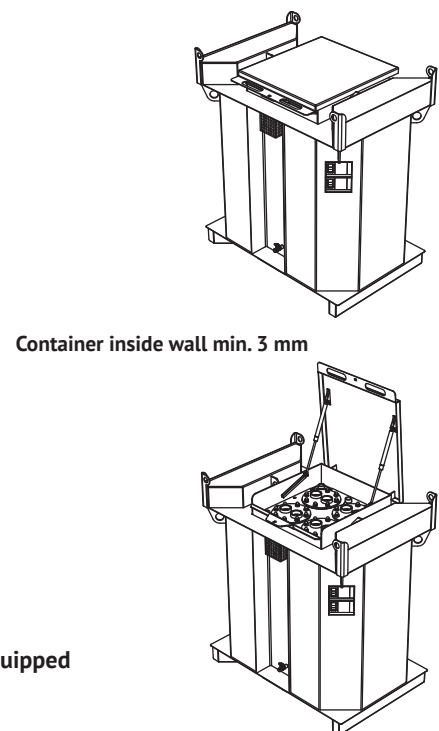
* According to the equipment weights can be vary.

Technical changes reserved!



Optional with tank heating

Attention: As an option it can be equipped to transport flammable media with a flash point < 55 °C.



Material	Approval	Documentation	Sheet
Structural steel S 235 JR (1.0038)	IBC: D/BAM 6252/31A Storage tank: Z-38.12-23	1x English	1 of 3

Transport and storage tank

Advantages



Krampitz®

CUBIC GOOD

Corrosion protection for outside installation

- Inside: unmanufactured, oiled
- Outside: L-A-3 KTS standard coating system, sandblasted, primed and coated in RAL 7032 (pebble grey) alternative RAL colours: RAL 3003 (ruby red), RAL 5007 (brilliant blue), RAL 8001 (ochre brown)

Documentation

- Test certificate
- Overview drawing
- D/BAM and general technical approval
- Datasheets for equipment
- Certificates of WHG and ISO 9001

Advantages

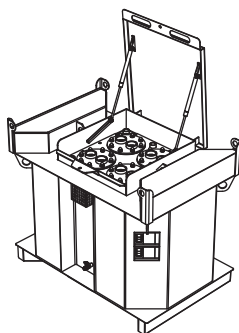
- Tank for Transport, handling, storage and supply of fuels and oils
- International approval for ship, rail and road (IBC)
- General construction supervision approval as storage tank
- Extremely durable, high static firmness through double wall structure
- Minimization of the danger potential by vacuum leakage indicator and the arrangement of the equipment which is protected in the tank body
- Conceived for world-wide application and transportation
- Laid out for temperatures from -5 °C to 50 °C
- Optimal space capacity ratio due to the cubic design
- Saving transportation costs through standardized surface area according to EUR-pallet standard
- Optimized transit times, laid out for all usual loading techniques
- High loading security through integrated tension sleeves
- Quick connection and disconnection for filling and extraction of media by dry clutch
- Transport optimized dimensions for bringing in trucks and freight containers
- Quick and easy attachment of the tank body on a truck by lashing straps
- Handling with a crane or forklift
- Possible extension to battery systems
- Constructed also for the use under extreme conditions
- Installation inside buildings, outside and in water protection area
- Individual equipments allow adequate and practice-oriented solutions
- Three times stackable (space saving of floor area)

UN 31A/Y/XX.XX/D/BAM 6252-KRAMPITZ/4700/*

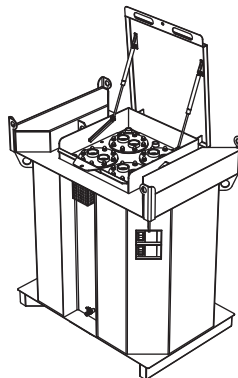
UN	Made, proved and approved according to the UN packing instructions
31A	IBC out of steel for liquid substances
Y	Approved for substances of the packaging groups II and III
XX.XX	Month and year of production
D	Country in which the approval was granted
BAM 6252-KRAMPITZ	Institution that grants the approval, approval number and manufacturer
4700	Test load of the stack pressure test in kg
*	Maximum permissible weight in kg (see table on page 1)



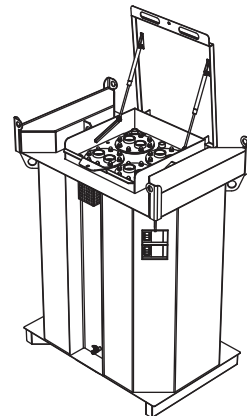
Maximum permissible stacking load is mounted as a pictogram on the front side of the tank.



CEN-501



CEN-751



CEN-951

Technical changes reserved!

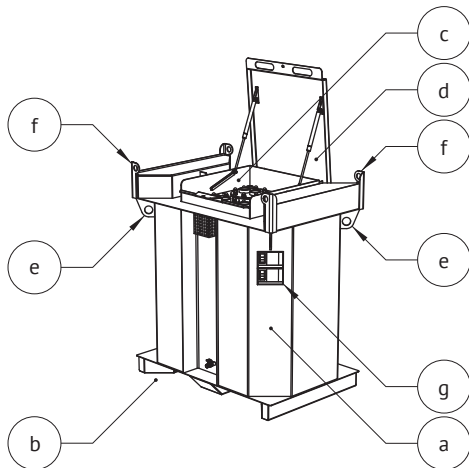
Material	Approval	Documentation	Sheet
Structural steel S 235 JR (1.0038)	IBC: D/BAM 6252/31A Storage tank: Z-38.12-23	1x English	2 of 3

Transport and storage tank

Nozzle schedule and equipment

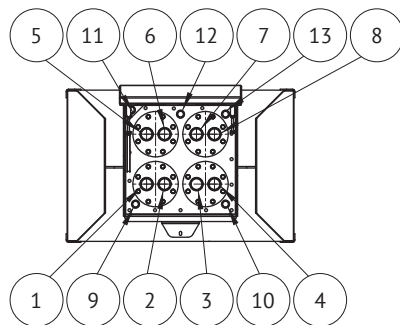
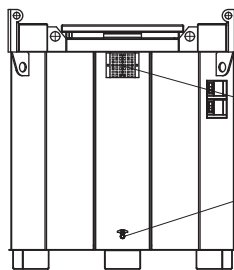


Krampitz



Equipment

- a) Durable, cubic, double wall body
- b) Bottom assembly optimized for easy loading with forklift and lift truck
- c) Hatch element, equipment on tank roof, weatherproof and vandalism-proof
- d) Sealing hood with gas pressure spring and handle strip
- e) Lashing eyes, 4x
- f) Crane eye and stacking corner, 4x
- g) Type plate and UN marking IBC plate



Nozzle schedule

Pos.	Nominal diameter	Connection
1	Sleeve G2"	Extraction, reduction, suction line 1" with check valve incl. ball valve
2	Sleeve G2"	Filling, filling pipe 2" incl. ball valve tanktruck filling pipe cap VK50
3	Sleeve G2"	Reserve, Blind plug
4	Sleeve G2"	Level indicator, mechanical
5	Sleeve G2"	Reduction, dip stick with sounding pipe cap
6	Sleeve G2"	Reserve, Blind plug
7	Sleeve G2"	Reserve, Blind plug
8	Sleeve G2"	Overfill protection, reduction limiting level transmitter with type approval
9	Sleeve G1"	Protection against dry running, stuffing gland with 1x cable gland
10	Sleeve G1"	level transmitter (float switch)
11	Sleeve G1"	Reserve, Blind plug
12	Sleeve G1"	Reserve, Blind plug
13	Sleeve G1"	Safety assembly for pressure equalization
14	Sleeve G1/2"	Safety valve -0.05 bar / +0.34 bar
15	Sleeve G3/8"	Ventilation
		Ball valve 1" with ventilation hood
		Reserve, Blind plug
		Instrument nozzle leakage detector
		Static vacuum leakage indicator with type approval
		Protective plate
		Suction nozzle for creating vacuum
		Ball valve 3/8" with blind plug

Technical changes reserved!

Material	Approval	Documentation	Sheet
Structural steel S 235 JR (1.0038)	IBC: D/BAM 6252/31A Storage tank: Z-38.12-23	1x English	3 of 3