







**KCS  
Smart****Storage tank container double wall**

# Kramptitz®

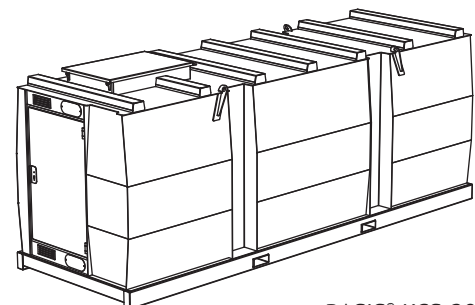
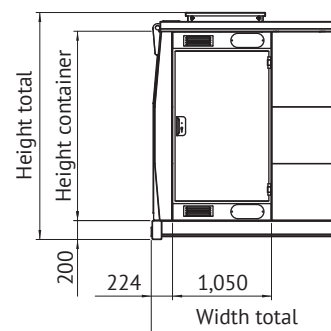
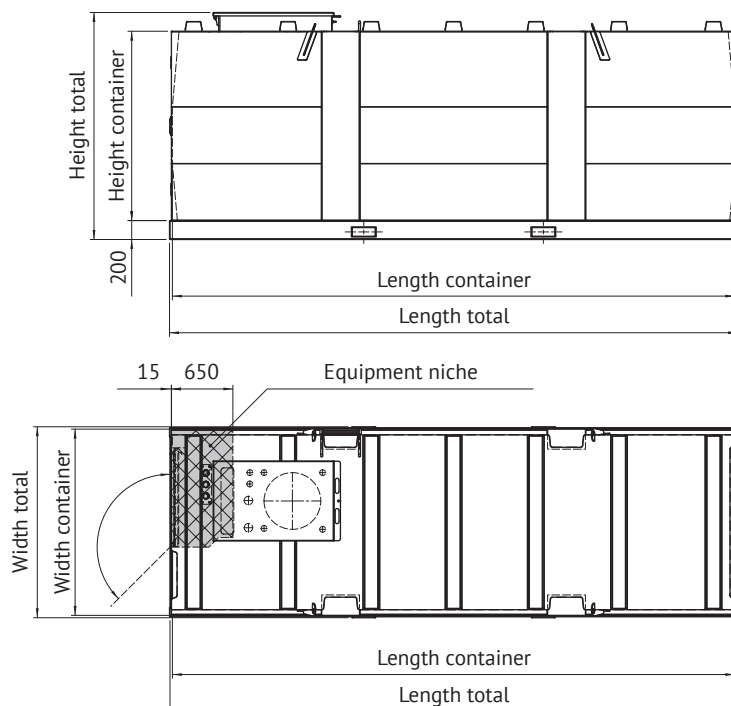


Characteristic	Area of Application/Media			Installation	
					
<b>E2</b> Double wall	<b>E12</b> Hazardous to ground water	<b>E10</b> Diesel/Heating oil	<b>E11</b> Chemical industry	<b>E3</b> Cleaned transportable	<b>E8</b> Outside use

The Smart tank container is designed for the storage of fuels, mineral oils and urea solution outside of buildings. It is a multifunctional double wall cubic tank body with an equipment niche in the front wall conceived for the use as a storage tank or process tank/petrol station for the inside/outside installation. The equipment niche is locked by a door. The man hole and the flanges on the roof side for the installation of the fittings are protected by a hatch element. The penetration opening above and below the door are used for the penetration of pipes and cables. At the outside of the Smart tank containers are welded each longitudinal side 4 fixing points. If required these points can be equipped with special vertical girders. In the inner front wall these are available as well. At the vertical girders platforms can be mounted which are designated for filling pumps and canisters. It can also be used as a special pumping system or as small containers. The installation of advertising banners are possible here.

Tank type	Volume 100 %	Volume 95 %	Length total	Length container	Width total	Width container	Height total	Height container	Weight (empty)
Art no.	l	l	mm	mm	mm	mm	mm	mm	ca. kg
KCS-05	5,400	5,200	2,010	1,970	2,020	1,970	2,410	2,002	1,800
KCS-10	10,400	10,000	3,410	3,370	2,020	1,970	2,410	2,002	2,800
KCS-20	19,800	18,800	6,010	5,970	2,020	1,970	2,410	2,002	4,000
KCS-30	30,600	29,000	9,010	8,970	2,020	1,970	2,410	2,002	5,800
KCS-40	41,200	39,400	12,010	11,970	2,020	1,970	2,410	2,002	7,800

**Please note:** Transportation only under clean and empty conditions!



BASIS® KCS-20  
Storage tank double wall

Technical changes reserved!

Material	Approval	Documentation	Sheet
Steel S 235 JRG2	General construction supervision approval Z-38.12-23	1x English	1 of 2



In the front side of the KCS is an equipment niche situated, in which the vacuum leakage detector is located. Furthermore additional pumps can be installed here which can supply external devices. This equipment niche is being locked by a door. On the tank roof a lockable hatch element is located, which can include the installed fittings on the rooftop.

#### Advantages:

- Optimal transport dimensions for truck transport
- Fits optimally in international High Cube ISO freight containers
- High static Festigkeit and safety by double wall construction
- Optimal space capacity ratio
- Cheap functional design

#### Standard equipment:

- Floor assembly with continuous longitudinal girder and integrated forklift pockets
- Durable, cubic, double wall body out of steel S 235 JR
- Heavy-duty crane eyes for lifting in emptied condition
- Tank roof (self-supporting, single wall construction)
- Hatch element mounted on tank roof, consisting of:
  - sealing hood with gas pressure spring and handle strip
  - Man hole DN 600
  - Connection interfaces (sleeve 2")
  - Ventilation nozzle DN 50, vent hood 2"
  - Mechanical level indicator (dip stick)
  - Suction line DN 25 (1") with foot valve and sieve
  - Limiting level transmitter (probe) with type approval
  - Filling nozzle for tank truck DN 50 with tank truck

coupling VK 50, in the hatch element

Function niche on the front side incl. sealing door, dimensions: width - 800 mm, depth - 500 mm, height - tank height, containing:

- Vacuum leak detector with type approval
- Cable and pipe penetration in the frame of the door element
- Montageblech
- Electrical connection and junction box (incl. control and wiring of the available electrical components), incl. lamp and switch
- Fire door (F30)

#### Special equipment:

- Special inner coatings
- Electrical tank heatings
- Outside device carrier with equipment platforms
- Special tank roofs
- Additional tanks with small dispensing units for service media
- Small dispensing units

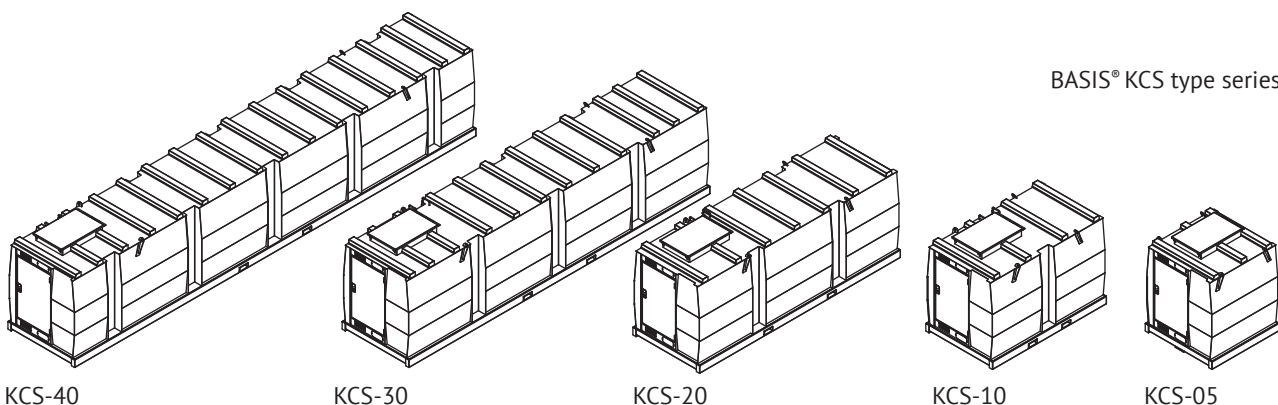
- Anschlussverteiler zur Versorgung von mehreren Maschinen
- Ladder (rungs mounted in one of the outside stiffening niches), incl. 2x handholds on the tank roof (ladder and handholds omitted when using thermal insulation)

#### Corrosion protection for outside use:

- Inside: unmanufactured, oiled
- Outside: KTS corrosion protection system II sandblasted, primed and varnished in RAL 7032 (pebble-grey)

#### Optional equipment:

- Device carriers
- Equipment platform
- Rest draining



BASIS® KCS type series

Technical changes reserved!

Material	Approval	Documentation	Sheet
Steel S 235 JRG2	General construction supervision approval Z-38.12-23	1x English	2 of 2