

**KCD-FL-XL**  
Width 3,000

**Fuel storage tank container double wall  
for Diesel and heating oil**



**Kram**  
**pit**  
**itz**

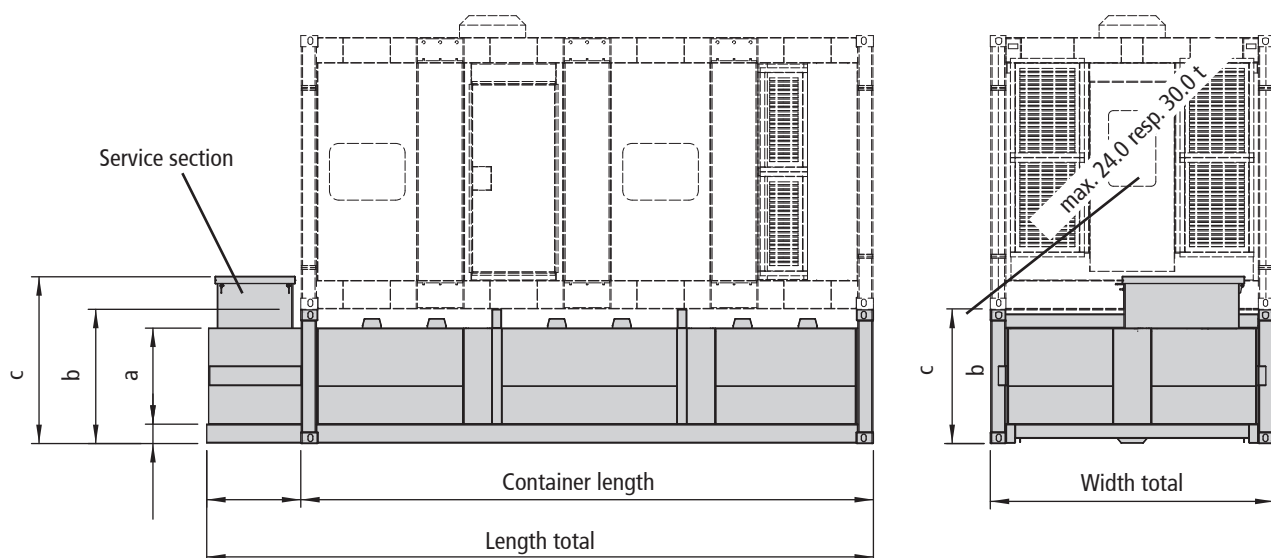


Characteristic	Area of Application / Media			Transportation / Installation	
E2 double wall	E12 hazardous to ground water	E10 Diesel/heating oil		E3 cleaned transportable	E8 use outside

The **extra-wide (3,000 mm)** double-walled extra-flat steel fuel storage tank container for storing diesel fuel is intended for supplying diesel generators. This storage tank container is equipped with a heavycontainer frame, which serves to carry an extra-wide machine housing on the storage tank container. This enables space-saving overall installations. The KCD-FL-XL offers a compact design and allows a quick installation of the machine on site. The service section with dome entry, connection flanges with 2" sleeves is located outside the ISO container frame. This is easy to install and service and makes the planning of the complete system simple. In addition to the hood element, a Krampitz fuel cleaning and maintenance system (KRP) can be installed on the service section in a weather protection housing if required.

Type of tank	Volume 100 %	Volume 95 %	Length container	Length total	Width total	Tank height	Height container	Height total	Weight (empty)
Art no.	l (approx.)	l (approx.)	mm	mm (approx.)	mm (approx.)	mm	mm	mm (approx.)	kg (approx.)
						a	b	c	
KCD-FL-20ft/500	9,514	9,038	6,058	7,058	3,000	500	920	1,269	3,709
KCD-FL-20ft/750	14,276	13,562	6,058	7,058	3,000	750	1.170	1,519	4,040
KCD-FL-20ft/1000	19,336	18,369	6,058	7,058	3,000	1,000	1.420	1,769	4,432
KCD-FL-40ft/500	18,070	17,166	12,192	13,192	3,000	500	920	1,269	6,604
KCD-FL-40ft/750	27,105	25,749	12,192	13,192	3,000	750	1.170	1,519	6,691
KCD-FL-40ft/1000	36,660	34,827	12,192	13,192	3,000	1000	1.420	1,769	7,820

**Please note:** Transport only in empty and clean condition!



Technical changes reserved!

Material	Approval	Documentation	Sheet
Steel S 235 JR	General Construction Supervision Approval Z-38.12-38	1x English	1 of 2

**KCD-FL-XL**  
Width 3,000

**Fuel storage tank container double wall  
for Diesel and heating oil**



**Kram**  
**poitz**



**Standard equipment:**

- Flat double wall fuel storage tank container out of steel equipped with vacuum leak detector
- Flat CSC container frame (ISO dimensions) welded with 8 ISO corners
- two additional mounting frames in a 1/3 longitudinal distance welded across the tank roof to take the load of the overhead machine container

Service section outside the front wall frame arranged equipped with:

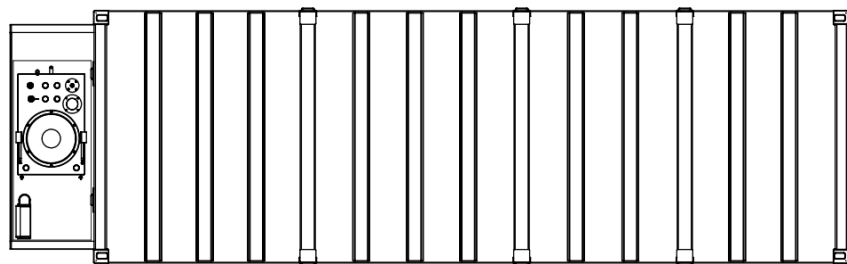
- hood element
- Locking cover and padlock
- Hinge made of stainless steel
- Dome entrance DN 600
- 5 flanges DN 160 with flange adapters:  
3 flanges with 2 sleeves 2" each  
2 flanges with 1 socket each 2"
- Vacuum leak detector console in side wall niche with locking door below the hood elements are mounted.
- 3x DN 100 pipe lead-through (stainless steel) for passing the fuel line to the machine container
- 1 Cable bushing DN 80
- Filling tube 2"
- corrosion protection:  
outside L-A-3  
inside raw

**Accessories optional (Excerpt):**

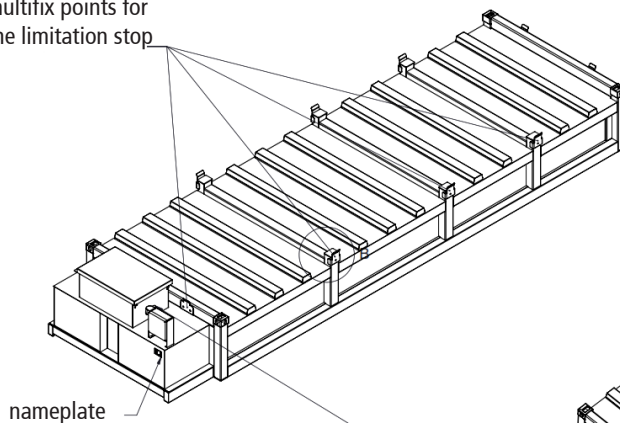
- Vacuum leak detector 230 V AC
- Vacuum leak detector 24 V DC
- Suction pipe with foot valve 1" and anti-stic valve
- Filling connection 2" with TW connection K, 2"
- Venting connection 2" with hood
- Mechanical capacity display
- Electronic capacity display
- Level transmitter (minimum detector)
- Limit value transmitter
- Overfill protection
- Air dryer for air vent
- filters, pumps
- Interior tank coating (corrosion protection)
- Painting in other RAL colours

**Documentation:**

- Test certificate
- Overview drawing
- building inspection approval
- Data sheets for accessories
- Certificates WHG and ISO 9001

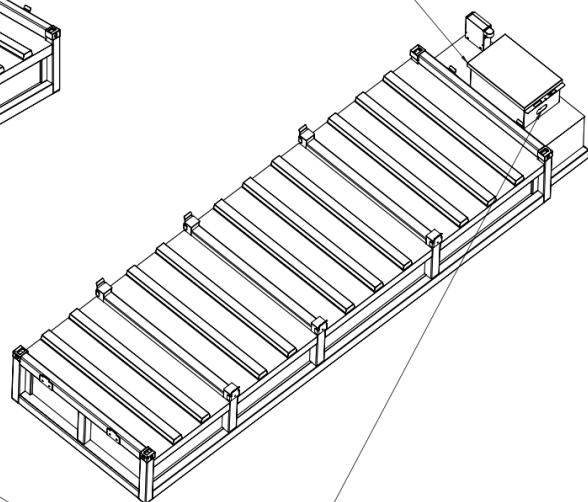


multifix points for the limitation stop

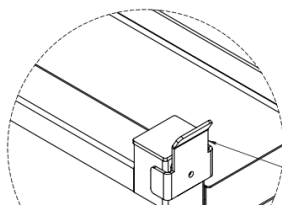


nameplate

hood element



cable opening



limitation stop plate

Technical changes reserved!

Material	Approval	Documentation	Sheet
Steel S 235 JR	General Construction Supervision Approval Z-38.12-38	1x English	2 of 2