



PK-10-010 Rotary Pump

Krampitz®



Characteristic	Area of Application / Media			Transportation / Installation	
					
	E3 inflammable	E10 diesel / fuel oil / mineral oil			

Application Areas and Installation

Recommended for pumping thin-bodied fluids, e.g. EL fuel oil, diesel, clean water and fluids that do not chemically attack the pump materials.

The pumps are designed so that the medium can be taken in even if it is mixed with air. Due to their reliability and maintenance-free operation, they are recommended for use in domestic and building services and industry, especially for water supply in connection with pressure vessels.

Flow volume up to 80 litre/min; delivery head up to 70 meters, manometric suction lift up to 9 meters; temperature of the medium to be pumped up to + 40°C; ambient temperature up to + 40°

insulation class: F, protection class: IP 44,

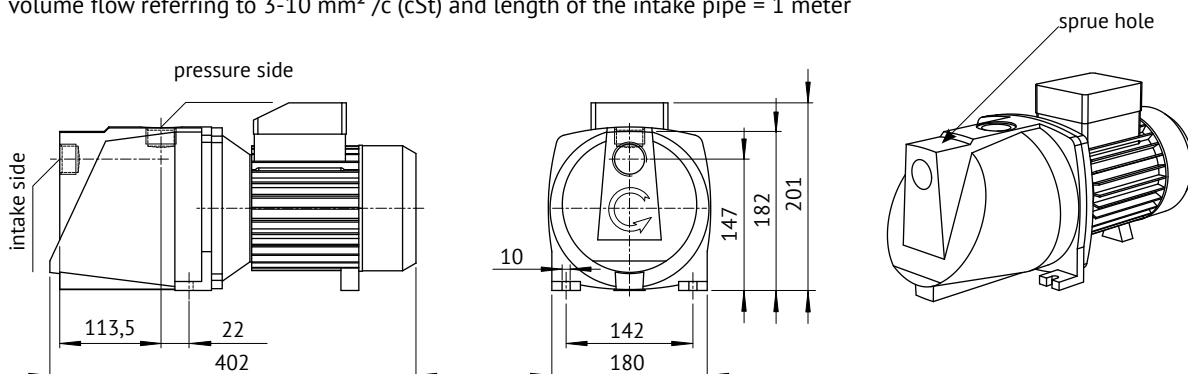
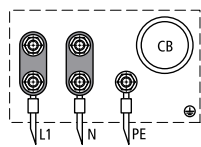
PK-10-010: triphase 3x230/400 V, 50 Hz

Please note: nstallation in closed rooms and in any case weather protected.

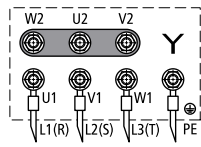
Before initial start-up, fill the pump body and also the suction line with the liquid to be pumped via the sprue hole. After filling, close the opening again

type	flow volume litre/min.	delivery head mWs	voltage V	current A	power kW	connection intake side	connection pressure side	weight kg
PK-10-010	80	21	400	2,6	0,75	1"	1"	13,8
	20	38						

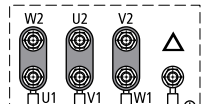
volume flow referring to 3-10 mm² /c (cSt) and length of the intake pipe = 1 meter

**Connection Diagram**

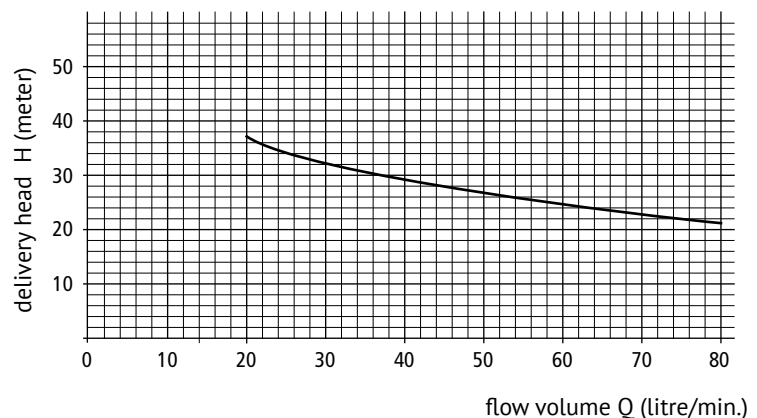
Connection Diagram 230 V/AC
AC single phase
CB - operating capacitor
(internally connected to engine,
no internal bridge required)



Connection Diagram 400 V
three-phase current
star circuit



Connection Diagram 400 V
three-phase current
delta connection

characteristic line when n= 2.900 r/min

Material	Approval	Documentation	Sheet
			1 of 1

Technical changes reserved!