





Kraampitz®

CUBIC GOOD

Characteristic	Area of Application / Media			Transportation / Installation	
					
	E3 flammable	E10 diesel / fuel oil / mineral oil			

Application Areas and Installation

It is recommended to deliver diesel/fuel oil and liquids which don't etch the material of the pump. The rotary pump PK-80 is a compact pump, which is used for spare and irregular delivery flow and media mixed with air. Flow volume up to 50 litre/ min; delivery head up to 40 meters, manometric suction lift up to 9 metres; temperature of the medium to be pumped up to + 90°C (+55°C for diesel-/fuel oil), ambient temperature up to + 40° insulation class: F, protection class: IP 44

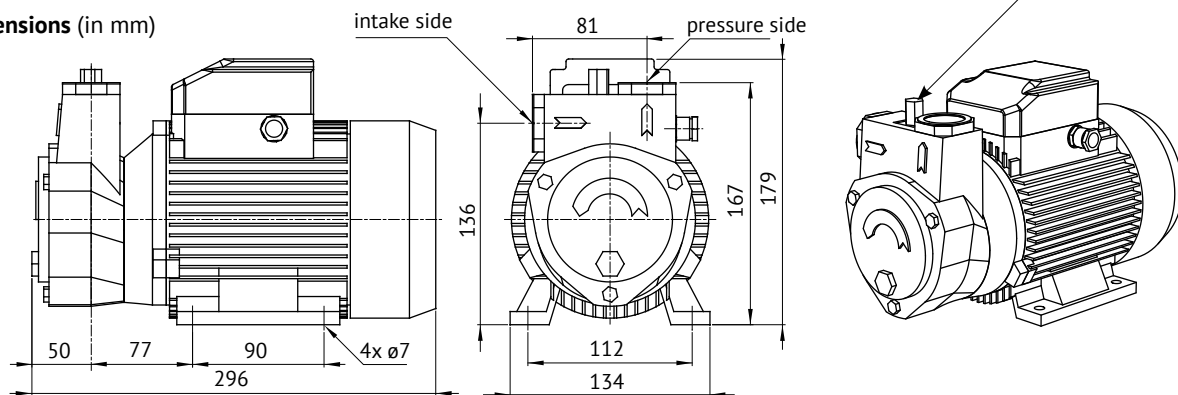
Please note: Installation in closed rooms and in any case weather protected.

Before initial start-up, fill the pump body and also the suction line with the liquid to be pumped via the sprue hole. After filling, close the opening again.

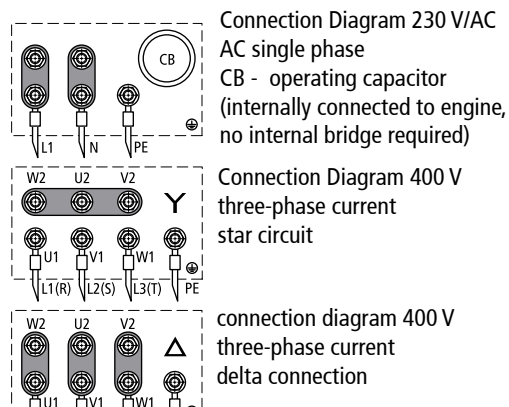
Type	Flow volume l/min.	Delivery head mWs	Voltage V	Current A	Frequency Hz	Engine power kW	Connection intake side	Connection pressure side	Weight kg
PK-80-015	43	5	230	5,0	50	0.6	1"	1"	11.6
	11	30							
PK-80-016	43	5	400	2,0	50	0,6	1"	1"	10,8
	11	30							

volume flow referring to 3-10 mm² /c (cSt) and length of the intake pipe = 1 metre

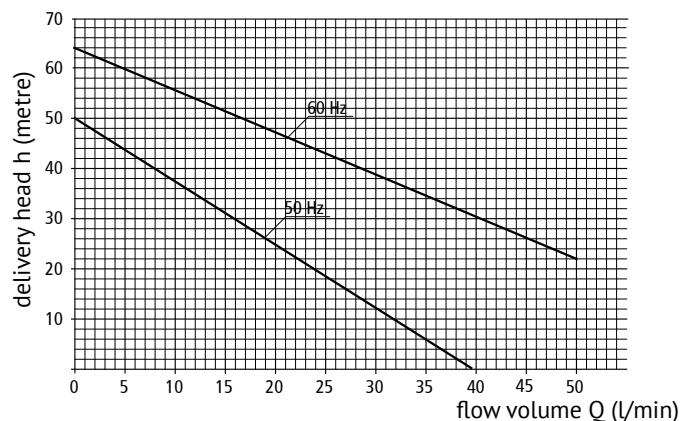
Dimensions (in mm)



Connection Diagram



characteristic line when $n = 3,450$ r/min



Material	Approval	Documentation	Sheet
			1 of 1