



PK-170-011 Rotary Pump



Krampitz®



Characteristic	Area of Application / Media			Transportation / Installation	
					
	E3 Inflammable	E10 Diesel / fuel oil / mineral oil			

Application areas and Installation

Recommended for pumping thin-bodied fluids, e.g. EL fuel oil, diesel, clean water and fluids that do not chemically attack the pump materials.

The pumps are designed so that the medium can be taken in even if it is mixed with air. Due to their reliability and maintenance-free operation, they are recommended for use in domestic, building and industrial applications, especially for water supply in connection with pressure vessels.

Flow rate up to 120 l/min; head up to 35 m, manometric suction head up to 7 m;

Temperature of the pumped medium up to 90 °C; ambient temperature up to 40 °C.

Insulation class: F; protection class: IP 44,

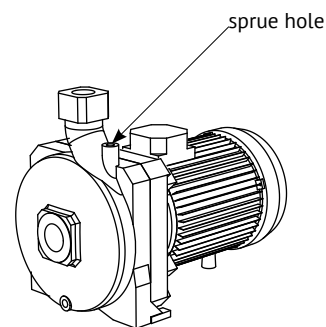
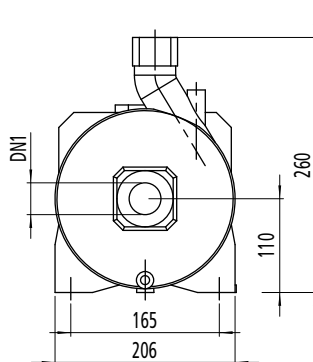
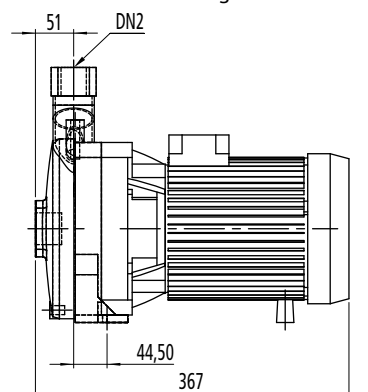
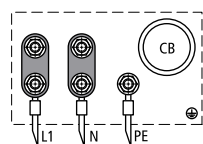
PK-170-011: three-phase 3x 230/400 V, 50 Hz

Please note: Installation in closed rooms and in any case weather protected.

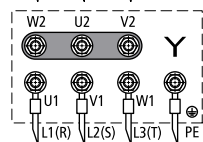
Before initial start-up, fill the pump body and also the suction line with the liquid to be pumped via the sprue hole. After filling, close the opening again.

Type no.	Flow volume l/min	Delivery head mWs	r/min.	Engine power kW	DN 1	DN 2	Weight kg
PK-170-11	120	22	2,900	1.1	1 1/4"	1"	18.5
	60	35					

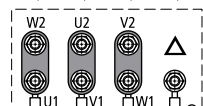
Volume flow referring to 3–10 mm²/c (cSt) and length of the intake pipe = 1 meter

**Connection Diagram**

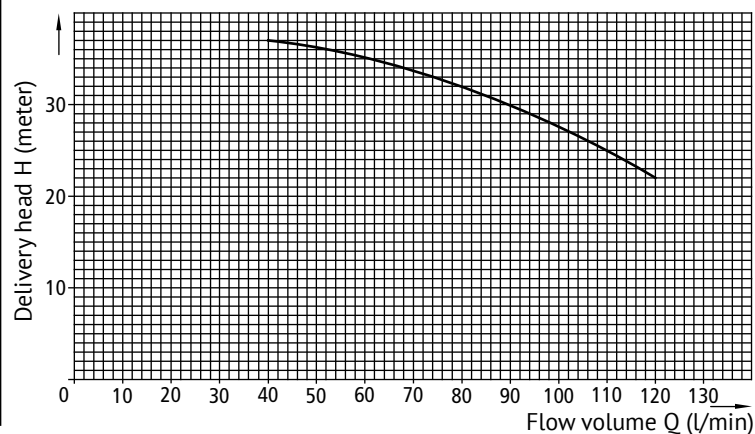
Connection Diagram 230 V/AC
AC single phase
CB - operating capacitor
(internally connected to engine, no
internal bridge required)



Connection Diagram 400 V
three-phase current
star circuit



Connection diagram 400 V
three-phase current
delta connection

Characteristic line when n=2,900 r/min

Material	Approval	Documentation	Sheet
		1x English	1 of 1