

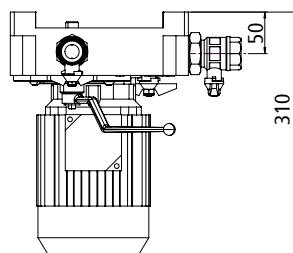
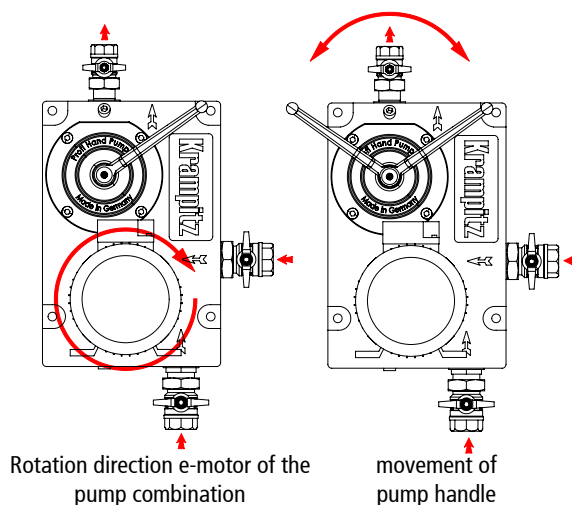
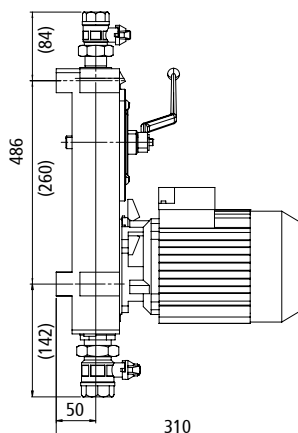
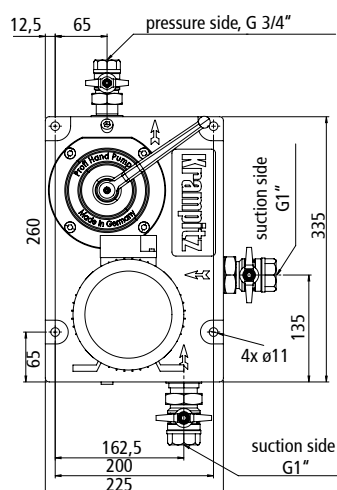


# Krampitz®

**CUBIC GOOD**

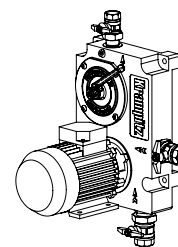
The pump combinations Z-PK-2020 (230 V) and Z-PK-2021 (400 V) are used exclusively for the delivery of diesel fuel and EL heating oil. A wide field of applications results from the good pumping capacity up to approximately 40-50 l/min at approximately 5 m delivery height (5 l/min at approximately 35 m height). The ambient temperature of the pump combination is +5 °C to +35 °C. The temperature of the pumped medium is +5 °C to +30 °C. The operating temperatures must be observed. The pump combinations Z-PK are a further development of the existing previous pump combinations. The Z-PK pump combination is protected by a utility patent. The main feature of this new development is the common bellhousing for the electric centrifugal pump and the hand wing pump. No piping or shut-off systems are required between the centrifugal pump and the hand wing pump. The Z-PK pump combination is installed inside closed buildings. The pump combination is fastened to vertical load-bearing walls, brackets or other suitable mountings with 4 screws.

Item no.		Z-PK-2020		Z-PK-2021		
	units	centrif. pump	HWP	centrifugal pump		HWP
flow rate	litre/min.	5 to 50	approx. 15*	5 to 50		approx. 15*
delivery height	mH2O	35 to 10	approx. 10	35 to 10		approx. 10
suction lift	m	6	4	6		4
voltage	V	220~230	-	Δ 220~230	Y 380~400	-
electric current	A	5,0	-	3,5	2,0	-
frequency	Hz	50	-	50		-
electrical power	kW	0,55	-	0,55		-
no. of revolutions	RPM	2.900	-	2.900		-
weight	kg	approx. 27		approx. 27		
optional		item no. Z-PK-2100 drip tray				



#### Advantages of the pump combination:

- compact building form of the pump-combination; reduction in weight and the required installation space
- simple exchangeability due to the ball valve with screws which is easy to install
- quick access to inlet and outlet openings
- improved tightness of shaft seals (NBR oil seal); test run in factory
- no switching over from electrical operation to manual operation is required

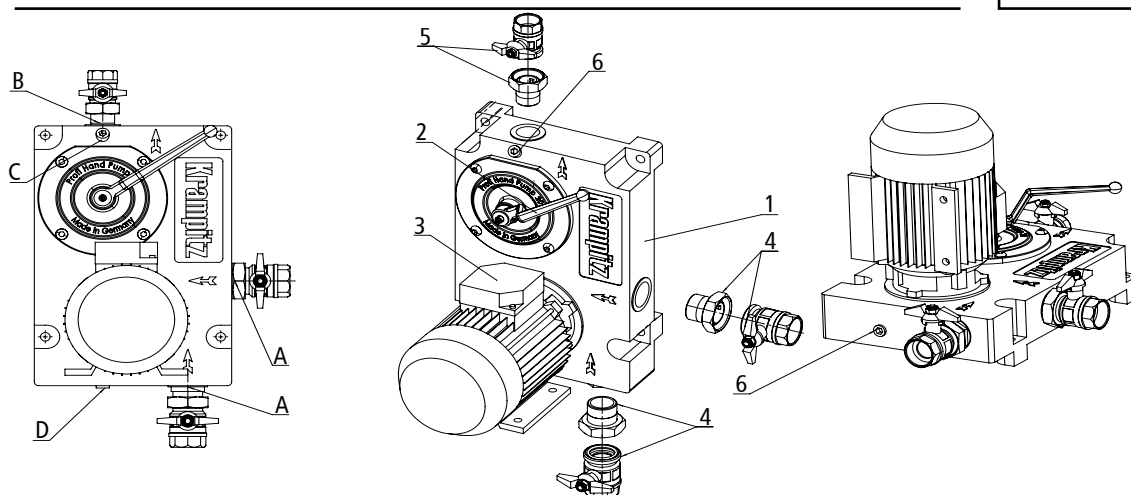


\*average values 60 double stroke per minute, HWP - semi rotary hand wing pump

Material		Documentation	Page
grey cast iron/aluminium		operating instructions 1x English	1 of 2



# Krampitz®

**CUBIC  
GOOD**


Pos	Description	Connection
1.	body of the twin pumps (grey iron)	-
2.	hand wing pump (aluminium)	flange
3.	electrical centrifugal pump	flange
4.	2x BV with screw connection	G1" (M/F)
5.	1x BV with screw connection	G3/4" (M/F)
6.	2x screw plug	M10

Pos.	Description	Connection
A	two inlets on the suction side	2x G1" (F)
B	outlet on the pressure side	1x G3/4" (F)
C	connections - filling hole	M10
D	connections - drain hole	M10

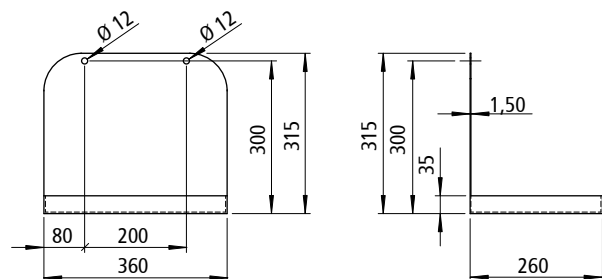
**note:**

BV = Ball valve with screw connection, conical sealing with O-ring, handle, outside screw thread (M) / inside screw thread (F)

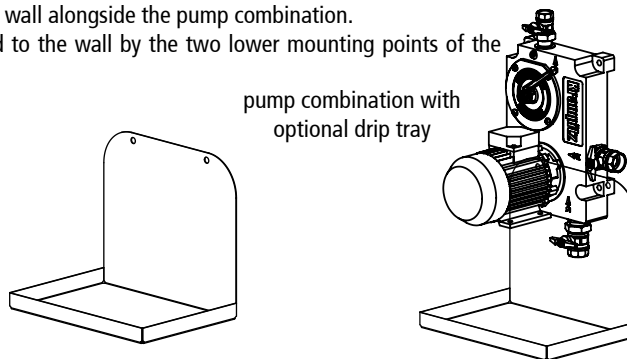
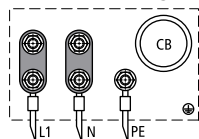
Before commissioning, fill the pump body and also the suction pipe with the liquid to be pumped via the sprue hole. After filling, close the opening again.

**The Z-PK 2100 drip tray** - can be installed on a solid and sustainable wall alongside the pump combination.

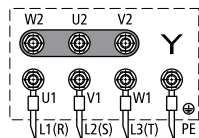
The drip tray is mounted behind the pump combination and mounted to the wall by the two lower mounting points of the pump combination.



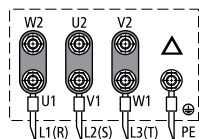
pump combination with  
optional drip tray

**Connection diagrams**

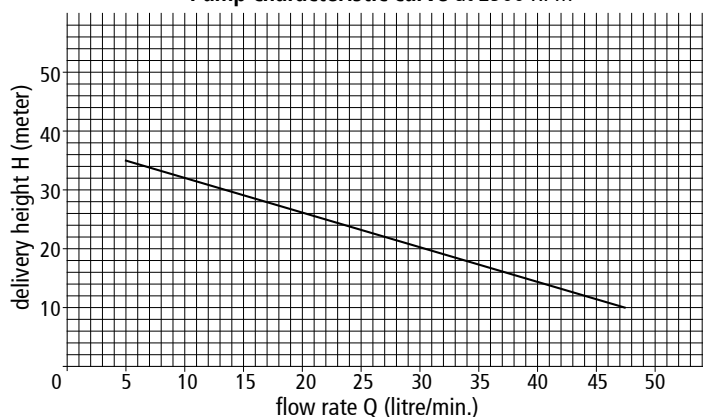
**Z-PK-2020**  
connection diagram 230 V / AC  
single-phase AC  
operating capacitor  
(connected internally to engine,  
no internal bridge required!)



**Z-PK-2021**  
connection diagram 400 V / AC  
three-phase current  
star circuit



**Z-PK-2021**  
connection diagram 400 V / AC  
three-phase current  
delta connection

**Pump characteristic curve at 2900 RPM**

Material	Documentation	Page
grey cast iron/aluminium	operating instructions 1x English	2 of 2