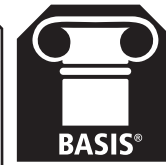


**KTD-DB**

**Storage tank double wall**



**Kramptitz®**



Characteristic	Area of Application / Media			Installation	
<b>E2</b> double wall	<b>E12</b> hazardous to ground water	<b>E5</b> flash point > 55 °C	<b>E7</b> flash point < 55 °C	<b>E3</b> transportable when cleaned	<b>E9</b> indoor use

The KTD serves to store fuel oil, diesel, mineral oil (fresh and waste oil) or other liquids hazardous to waters such as urea solution in accordance with the approval. It is also identified as a holding tank or reservoir. Its double wall construction of steel ensures the highest safety requirements. An additional catch sump is not required. The cubic design guarantees an optimal space utilization. The KTD is suited both for indoor installation and installation in a facility container. The installation surface must be smooth and sustainable.

The KTD can be transported by a forklift, lift truck or crane without any problem.

Tank type	Volume 100 %	Volume 95 %	Length	Width	Width total	Height tank	Height total	Weight
item number	l	l	mm	mm	mm	mm	mm	kg
KTD-950	990	930	1.000	750	760	1.500	1.950	450
KTD-1500	1.520	1.440	1.500	750	760	1.500	1.950	560
KTD-2000	2.040	1.930	1.500	1.000	1.010	1.500	1.950	680
KTD-2500	2.750	2.640	2.000	1.000	1.010	1.500	1.950	795
KTD-3000	3.500	3.300	2.000	1.250	1.260	1.500	1.950	920
KTD-4000	4.150	3.950	2.000	1.500	1.510	1.500	1.950	1.080
KTD-4500	4.980	4.700	2.500	1.500	1.510	1.500	1.950	1.180
KTD-6000	6.000	5.700	3.000	1.500	1.530	1.500	1.950	1.460
KTD-9000	9.350	8.900	3.400	2.000	2.030	1.500	1.950	1.840
KTD-10000	10.640	10.080	3.000	2.000	2.000	2.000	2.450	1.850

**Notice:** Transport is only permitted while the tank is clean and emptied!

**Standard equipment:**

- preparation for leak detector (with removable console)
- mechanical content indicator
- burst protection
- dome access DN 600
- connection sleeves as per connection table
- dust protection caps
- crane eyes
- access steps inside tank for inspection
- filling pipe 2" screwed in
- feet (height: 100 mm)
- type plate
- exterior access ladder (starting from KTD-6000)
- 1x flange Ø 160 mm with 1" sleeve

**Corrosion protection:**

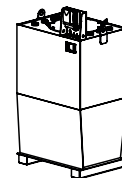
- exterior: L-A-1 RAL 7032
- interior: raw, oiled

**Optional equipment:**

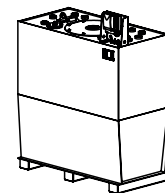
- electrical content indicator
- overfill protection
- level sensor
- pumps
- electrical tank heating
- pipe heat register warm water
- filling connection 2" with 45° angle and tanker plug K, 2"
- suction pipe 1" with foot valve 1" flanged for withdrawal

**Special equipment:**

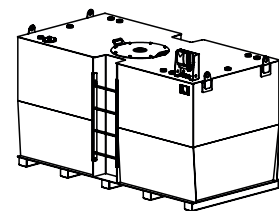
- coating in different RAL colors



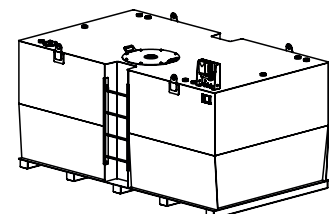
BASIS® KTD-950



BASIS® KTD-1500



BASIS® KTD-6000



BASIS® KTD-9000

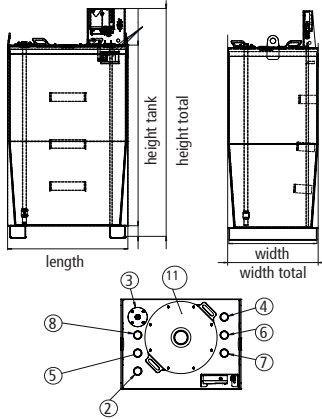
**ATTENTION:** Leak detector not included in the price, as either 230 V or 24 V are available.

Material	Approval	Documentation	Page
Steel S235JR	General Construction Supervision Approval Z-38.12-23	Test Certificate 1x English	1 of 2

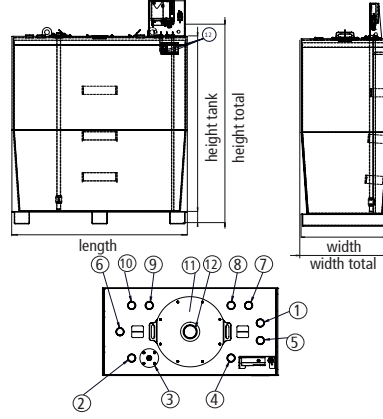
Technical details are subject to change!



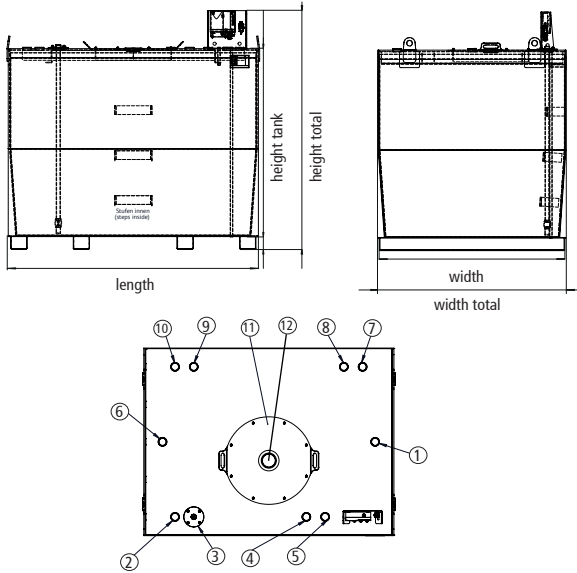
BASIS® - KTD-950



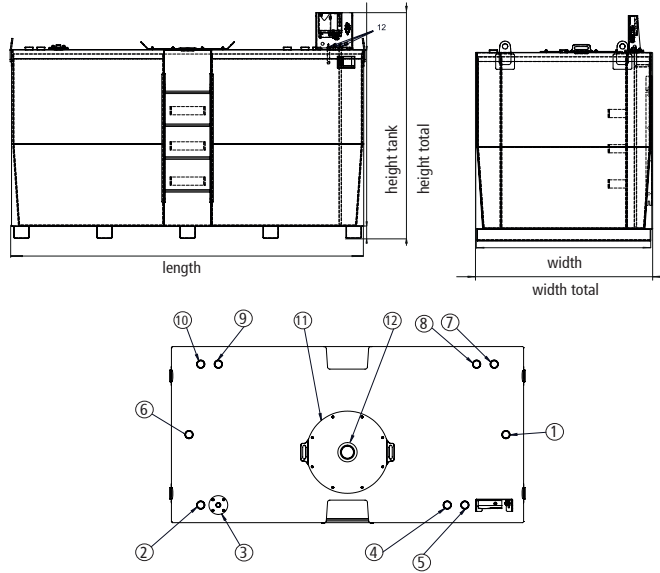
BASIS® - KTD-1500



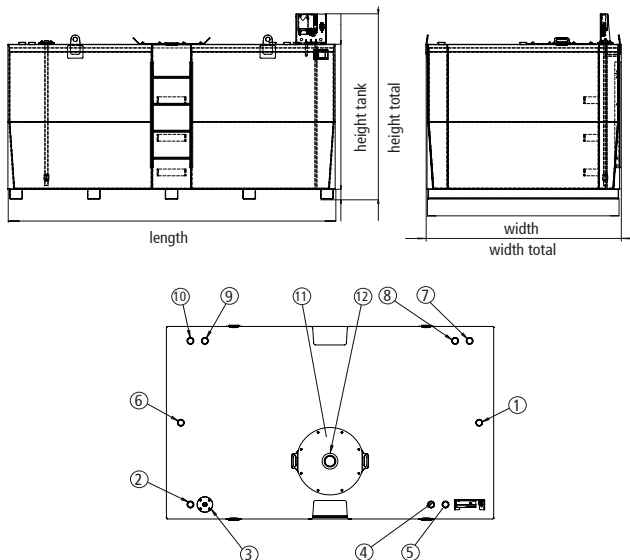
BASIS® - KTD-4000



BASIS® - KTD-6000



BASIS® - KTD-9000



Connection table

Pos.	Diameter	Connection
1	sleeve G2"	ventilation
2	sleeve G2"	filling
3	sleeve G1"	withdrawal 1x flange Ø 160 mm with 1" sleeve
4	sleeve G2"	overflow protection
5	sleeve G2"	content indicator
6	sleeve G2"	return flow
7	sleeve G2"	reserve
8	sleeve G2"	level indicator
9	sleeve G2"	reserve
10	sleeve G2"	reserve
11	dome access DN 600 (DN 500 for KTD-950)	inspection opening
12		burst protection

Material	Approval	Documentation	Page
Steel S235JR	General Construction Supervision Approval Z-38.12-23	Test Certificate 1x English	2 of 2