








model series

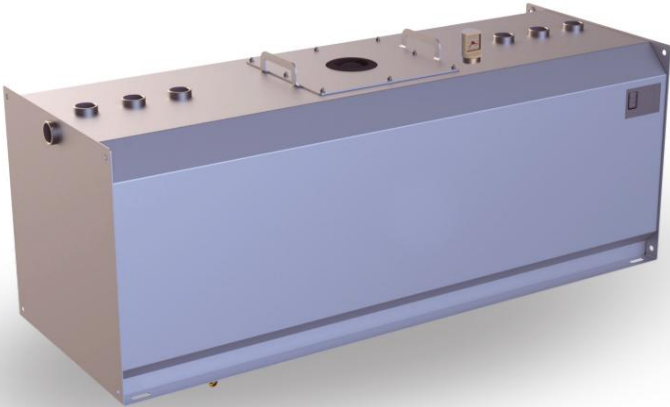
TTE-B-UR

Product data sheet - as of November 11, 2023

Single-walled day tank (earthquake zone 1-3 Urea)



Characteristic		Area of application / media		Transport / installation	
	E1 single-walled		E12 hazardous to groundwater		E19 Flash point >55°C
	E14 Within Special coating		E3 cleaned and transportable		E9 Interior use



Krampitz



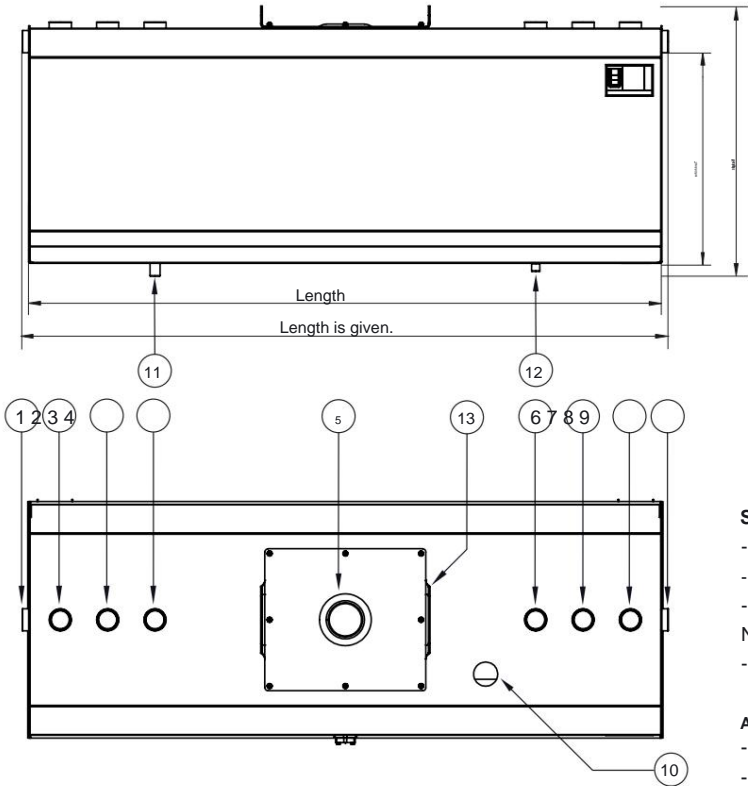
The TTE-B-UR serves as a day tank for supplying aggregates with urea. The TTE-B-UR is also referred to as a storage tank.

Due to its structure and features, it meets the requirements for use in emergency power systems in accordance with VDE 107/108. It is suitable for installation in buildings as well as in system containers.

The installation surface must be level, load-bearing and designed as a collecting tray. If there is no collection space available on site, a collection tray must be used. The cubic design of the TTE-B-UR guarantees optimal use of space.

designation	Volume 100 %	Volume 95 %	Long	Long in total	Width	Width in total	Height	Height in total	Weight
	l	l	mm	mm	mm	mm	mm	mm	kg
TTE-B-500-UR	500	470	1.510	1.550	750	775	505	530	115
TTE-B-750-UR	770	730	1.510	1.550	750	775	755	780	153
TTE-B-990-UR	1.020	980	2.010	2.050	750	775	755	780	192

material	Permit	Documentation	Blatt
Steel S235JR	General building supervisors Approval Z-38.11-86	Test certificate 1x German	1 of 2



**Standard equipment:**

- Burst protection
- Connection sleeves according to socket table (VA)
- Float content display - Nameplate
- Dust caps

**Accessory package:**

- Ventilation connection (VA) 2" with hood (PE)
- Flow (VA) 3/4", ball valve (VA) 3/4", angle (VA) 90° 3/4"
- Restentleerung (VA) 1/2" with KFE-Hahn (VA) 1/2"
- Reduction (VA) 2" x 3/4" (2x), Reduction (VA) 2" x 1" (2x)
- Blindstopfen (VA) 2" (4x) / Krampitz Sealfix 10 ml

**Accessories optional:**

- Collection tray type TW-B
- Wall console type WK-B
- Foot type FS-B / column type ST-B
- Electronic content display
- Overfill protection / level indicator
- Filling neck with angle 2" 45° and TW connection VK50 (VA)

**Corrosion protection:**

- Exterior: LA-1 paint RAL 7032
- Within: LI-2-UR

**Special equipment:**

- Painting in all RAL colors

**Nozzle table**

**Pos. Nominal diameter connection**

1 / 9 Sleeve G2"	overflow
2 Socket G2"	filling
3 Socket G2"	Level stabl
4 Socket G2"	Reserve
5 Ø 115 mm burst protection	
6 Socket G2"	Reserve
7 Socket G2"	Rewind
8 Socket G2"	Venting
10 Socket G2"	Content display
11 Sleeve G 3/4" feed	
12 socket G 1/2" residual emptying	
13 390 x 450mm inspection opening	

Technical changes reserved!

material	Permit	Documentation	Blatt
Steel S235JR	General building supervisors Approval Z-38.11-86	Test certificate 1x German	2 of 2