





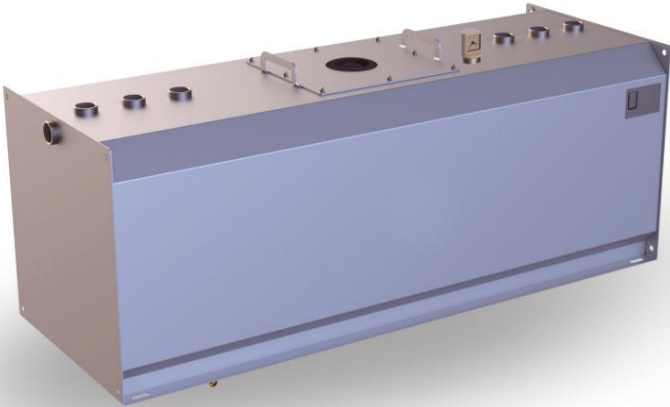


model series		Product data sheet - as of November 11, 2023				
TTE-B-VA		Single-walled stainless steel day tank (earthquake zone 1-3, urea, diesel, lubricating oil)				
Characteristic		Area of application / media		Transport / installation		
		 		 		
E1		E12		E19		
single-walled		hazardous to groundwater		Flash point >55°C		
				E3 cleaned and transportable		
				E9 Interior use		



Krampitz



The TTE-B-VA serves as a day tank for supplying units with fuel, urea and lubricating oil. The TTE-B-VA is also known as a storage tank. Due to its structure and features, it meets the requirements for use in emergency power systems in accordance with VDE 107/108. It is suitable for installation in buildings as well as in system containers.

The installation surface must be level, load-bearing and designed as a collecting tray. If there is no collection space available on site, a collection tray must be used. The cubic design of the TTE-B-VA guarantees optimal use of space.

designation	volume 100%	volume 95%	length	length in total	Width	Width in total	Height	Height in total	Weight
	l	l	mm	mm	mm	mm	mm	mm	kg
TTE-B-100-VA	106	100	510	550	500	525	505	530	38
TTE-B-250-VA	265	250	1,260	1,300	500	525	505	530	78
TTE-B-500-VA	500	470	1,510	1,550	750	775	505	530	115
TTE-B-750-VA	770	730	1,510	1,550	750	775	755	780	153
TTE-B-990-VA	1,020	980	2,010	2,050	750	775	755	780	192

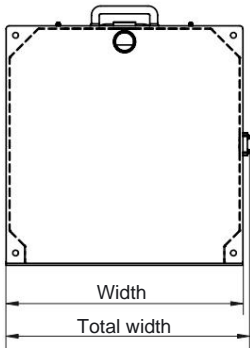
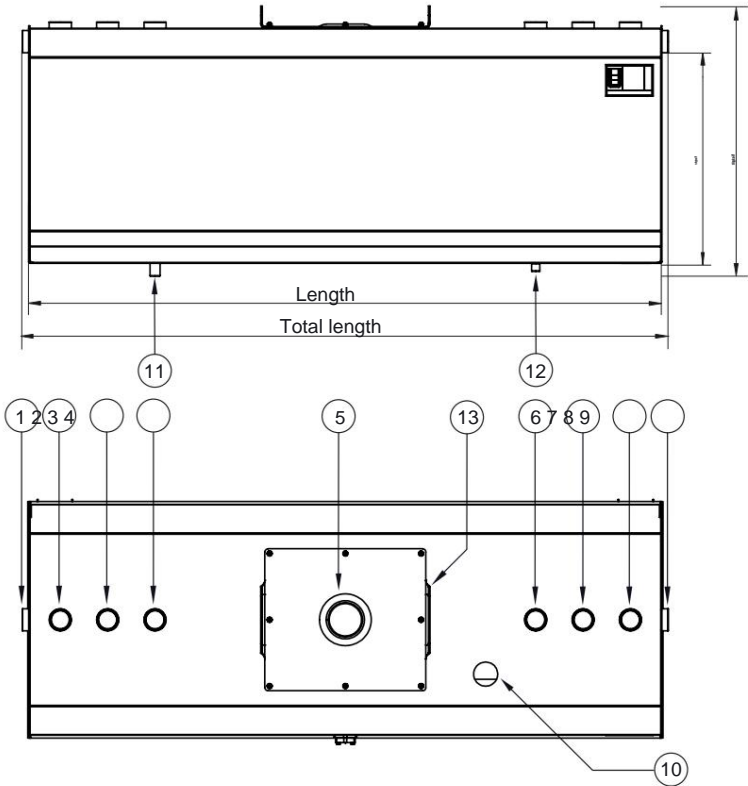
material	Permit	documentation	Sheet
Stainless steel (1.4571)	General building supervisors Approval Z-38.11-86	Test certificate 1x German	1 of 2

model series

TTE-B-VA

Product data sheet - as of November 11, 2023

Single-walled stainless steel day tank
(earthquake zone 1-3, urea, diesel, lubricating oil)



Nozzle table

Pos. Nominal diameter connection

1 / 9 sleeve G2"	overflow
2 Sleeve G2"	filling
3 Sleeve G2"	Level indicator
4 sleeve G2"	reserve
5 Ø 115 mm burst protection	
6 Sleeve G2"	reserve
7 Sleeve G2"	Rewind
8 Sleeve G2"	Venting
10 sleeve G2"	Content display
11 Sleeve G 3/4" feed	
12 socket G 1/2" residual emptying	
13 390 x 450mm inspection opening	(suitable for TTE-B-100, 250VA inspection opening)

Standard equipment:

- Burst protection
- Connection sleeves according to the connection table
- Float content display
- Type label
- Dust caps (PE)

Accessory package:

- Ventilation connection (VA) 2" with hood (PE)
- Flow (VA) 3/4", ball valve (VA) 3/4", angle (VA) 90° 3/4"
- Residual emptying (VA) 1/2" with KFE tap (VA) 1/2"
- Reduction (VA)2" x 3/4" (2x)
- Reduction (VA) 2" x 1" (2x)
- Blind plug (VA) 2" (4x) / Krampitz Sealfix 10 ml

Accessories optional:

- Collection tray type TW-B
- Wall console type WK-B
- Foot type FS-B / column type ST-B
- Electronic content display
- Overfill protection / level indicator
- Filling neck with angle (VA) 2" 45° and TW connection VK 50 (VA)

Corrosion protection:

- Outside: cleaned, stained
- Inside: cleaned, stained

Special equipment:

- Painting in all RAL colors

Technical changes reserved!

material	Permit	documentation	Sheet
Stainless steel (1.4571)	General building supervisors Approval Z-38.11-86	Test certificate 1x German	2 of 2