







model series

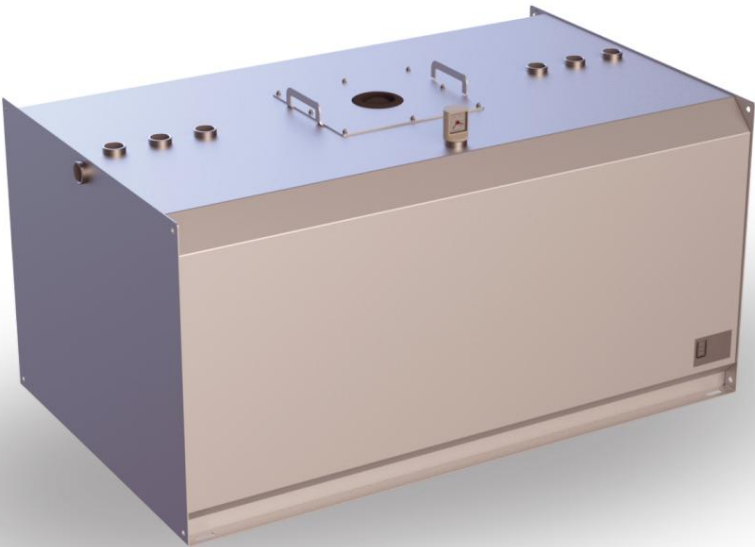
TTE-C-EBZ

Product data sheet - as of November 11, 2023

Single-walled day tank (earthquake zone 1-3)



Characteristic	Area of application / media		Transport / installation	
				
E1 single-walled	E12 hazardous to groundwater	E19 Flash point >55°C	E3 cleaned and transportable	E9 Interior use



Krampitz



The TTE-C-EBZ serves as a day tank for supplying units with fuel and lubricating oil. The TTE-C-EBZ is also referred to as a storage tank. Due to its structure and features, it meets the requirements for use in emergency power systems in accordance with VDE 107/108. It is suitable for installation in buildings as well as in system containers.

The installation surface must be level, load-bearing and designed as a collecting tray. If there is no collection space available on site, a collection tray must be used. The cubic design of the TTE-C-EBZ guarantees optimal use of space.

designation	volume 100%	volume 95%	length	length in total	Width	Width in total	Height	Height in total	Weight
	l	l	mm	mm	mm	mm	mm	mm	kg
TTE-C-1500-EBZ	1,870	1,790	2,010	2,050	1,000	1,000	1,005	1,030	336
TTE-C-1950-EBZ	2,370	2,260	2,010	2,050	1,250	1,250	1,005	1,030	428

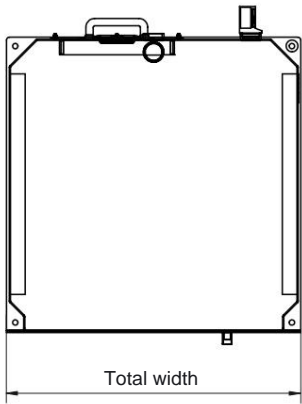
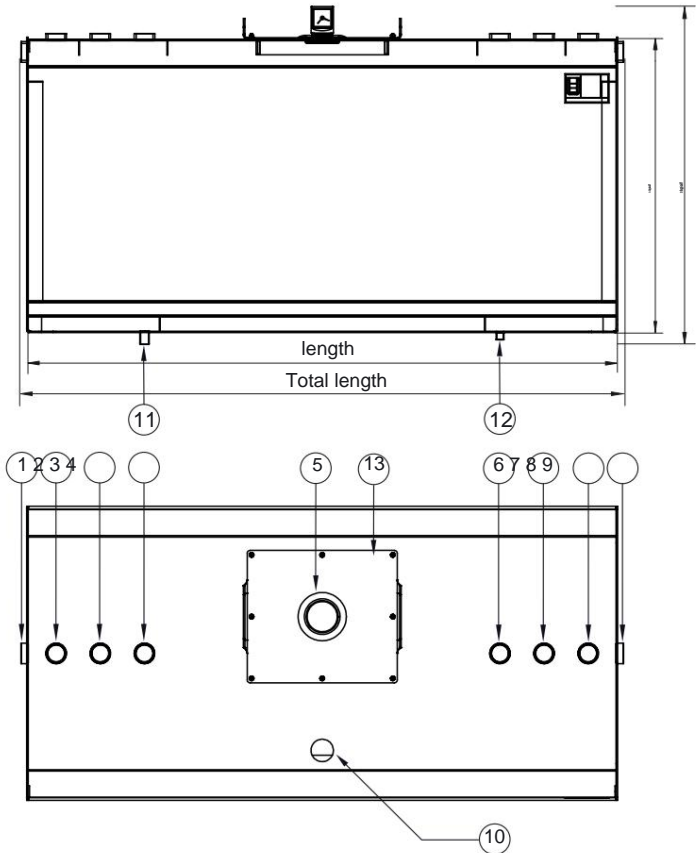
material	Permit	documentation	Sheet
Steel S235JR	General building supervisors Approval Z-38.11-86	Test certificate 1x German	1 of 2

model series

TTE-C-EBZ

Product data sheet - as of November 11, 2023

Single-walled day tank (earthquake zone 1-3)



Nozzle table

Pos. Nominal diameter connection

- 1 / 9 sleeve G2"

overflow
- 2 Sleeve G2"

filling
- 3 Sleeve G2"

Level indicator
- 4 sleeve G2"

reserve
- 5 Ø 115 mm burst protection
- 6 Sleeve G2"

reserve
- 7 Sleeve G2"

Rewind
- 8 Sleeve G2"

Venting
- 10 sleeve G2"

Content display
- 11 Sleeve G 3/4" feed
- 12 socket G 1/2" residual emptying
- 13 390 x 450mm inspection opening

Standard equipment:

- Burst protection
- Connection sleeves according to the connection table
- Float content display -
- Nameplate
- Dust caps

Accessory package:

- Ventilation port 2" with hood
- Flow 3/4", ball valve 3/4", angle 90° 3/4"
- Residual emptying 1/2" with KFE tap 1/2"
- Reduction 2" x 3/4" (2x), Reduction 2" x 1" (2x)
- Blind plug 2" (4x) / Krampitz Sealfix 10 ml

Accessories optional:

- Collection tray type TW-C
- Foot type FS-C / column type ST-C
- Electronic content display
- Overfill protection / level indicator
- Pumps, tank heating
- Filling neck with pipe angle 2" 45° and TW connection K, 2"

Corrosion protection:

- Exterior: LA-1 paint RAL 7032
- Inside: raw, oiled

Special equipment:

- Painting in all RAL colors

Technical changes reserved!

material	Permit	documentation	Sheet
Steel S235JR	General building supervisors Approval Z-38.11-86	Test certificate 1x German	2 of 2