





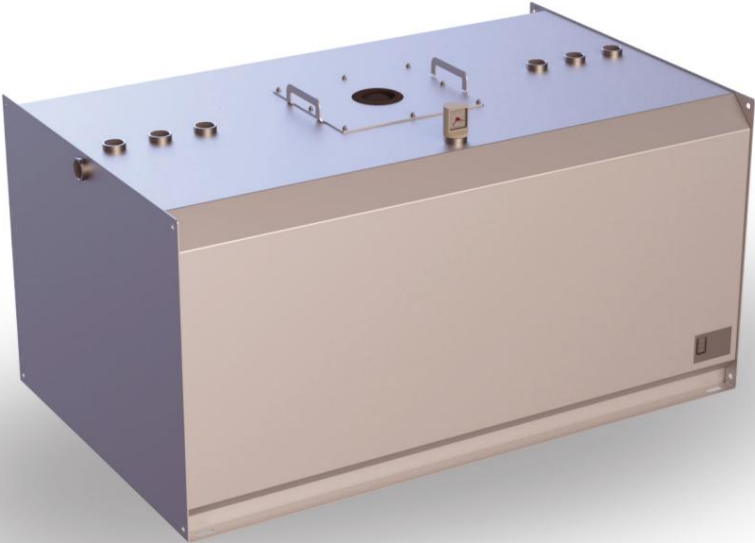


model series		Product data sheet - as of November 11, 2023		
TTE-C-VA		Single-walled stainless steel day tank (earthquake zone 1-3, urea, diesel, lubricating oil)		
				
Characteristic		Area of application / media		Transport / installation
		 		 
E1 single-walled		E12 hazardous to groundwaterFlash point >55°C		E3 cleaned and transportableE9 Interior use

Krampitz®



The TTE-C-VA serves as a day tank for supplying units with fuel, urea and lubricating oil. The TTE-C-VA is also known as a storage tank. Due to its structure and features, it meets the requirements for use in emergency power systems in accordance with VDE 107/108. It is suitable for installation in buildings as well as in system containers.

The installation surface must be level, load-bearing and designed as a collecting tray. If there is no collection space available on site, a collection tray must be used. The cubic design of the TTE-C-VA guarantees optimal use of space.

designation	Volume 100%	Volume 95%	length	length in total	Width	Total width	Height	Height in total	Weight
	l	l	mm	mm	mm	mm	mm	mm	kg
TTE-C-1500-VA	1,870	1,790	2,010	2,050	1,000	1,000	1,005	1,030	336
TTE-C-1950-VA	2,370	2,260	2,010	2,050	1,250	1,250	1,005	1,030	428

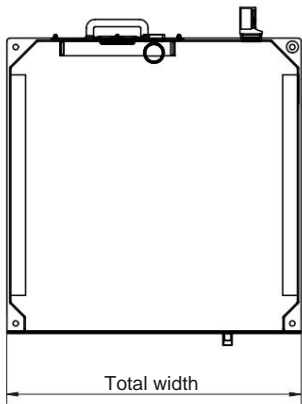
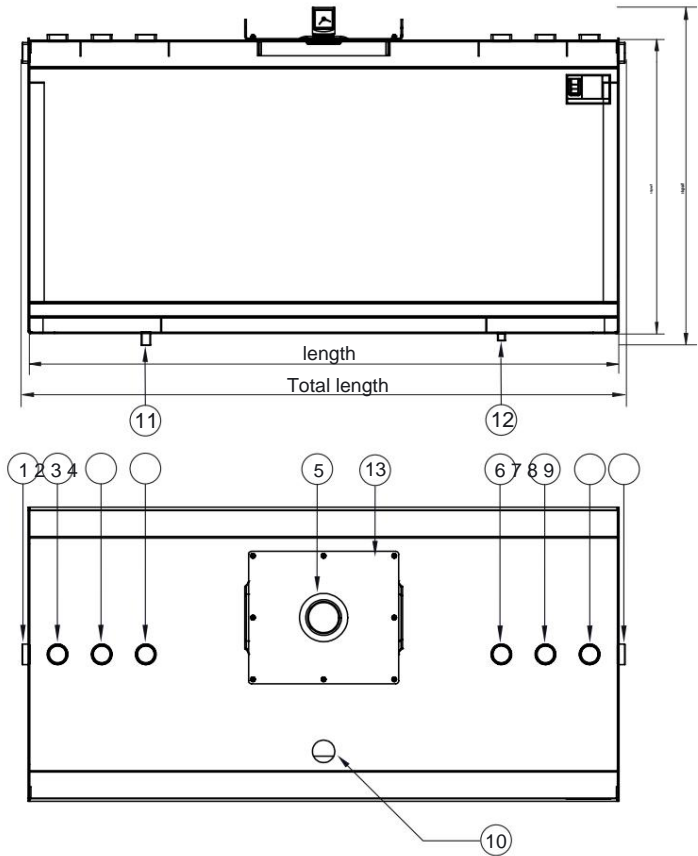
material	Permit	documentation	Sheet
Stainless steel (1.4571)	General building supervisors Approval Z-38.11-86	Test certificate 1x German	1 of 2

model series

TTE-C-VA

Product data sheet - as of November 11, 2023

Single-walled stainless steel day tank
(earthquake zone 1-3, urea, diesel, lubricating oil)



Nozzle table

Pos. Nominal diameter connection

1 / 9	sleeve G2"	overflow
2	Sleeve G2"	filling
3	Sleeve G2"	Level indicator
4	sleeve G2"	reserve
5	Ø 115 mm	burst protection
6	Sleeve G2"	reserve
7	Sleeve G2"	Rewind
8	Sleeve G2"	Venting
10	sleeve G2"	Content display
11	Sleeve G 3/4"	feed
12	socket G 1/2"	residual emptying
13	390 x 450mm	inspection opening

Standard equipment:

- Burst protection
- Connection sleeves according to the connection table
- Float content display -
- Nameplate
- Dust caps (PE)

Accessory package:

- Ventilation connection (VA) 2" with hood (PE)
- Flow (VA) 3/4", ball valve (VA) 3/4", angle (VA) 90° 3/4"
- Residual emptying (VA) 1/2" with KFE tap (VA) 1/2"
- Reduction (VA) 2" x 3/4" (2x)
- Reduction (VA) 2" x 1" (2x)
- Blind plug (VA) 2" (4x) / Krampitz Sealfix 10 ml

Accessories optional:

- Collection tray type TW-C
- Foot type FS-C / column type ST-C
- Electronic content display
- Overfill protection / level indicator
- Filling neck with angle (VA) 2" 45° and TW connection VK 50 (VA)

Corrosion protection:

- Outside: cleaned, stained
- Inside: cleaned, stained

Special equipment:

- Painting in all RAL colors

Technical changes reserved!

material	Permit	documentation	Sheet
Stainless steel (1.4571)	General building supervisors Approval Z-38.11-86	Test certificate 1x German	2 of 2