

model series Product data sheet - as of November 11, 2023

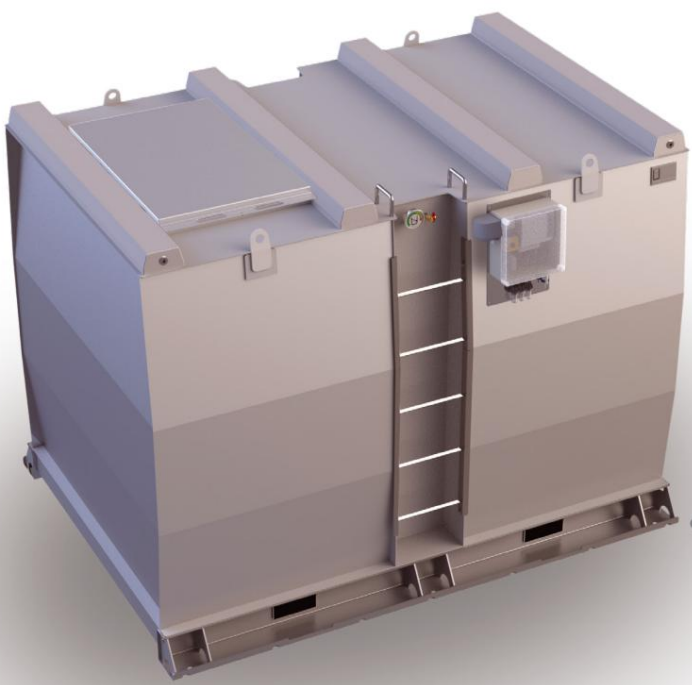
# KTD-FHW-A double-walled storage tank



Krampitz



Characteristic	Area of application / media				Lineup	
<b>E2</b> double-walled	<b>E12 basic</b> hazardous to water	<b>E19</b> Flash point >55°C	<b>E24</b> Flood	<b>E3 cleaned</b> and transportable	<b>E8</b> Outdoor use	



KTD-FHW-A 10

The KTD-FHW is used to store water-polluting media, such as heating oil, diesel, mineral oil and process water. It is designed for installation in flood areas in buildings or outdoors within or outside all earthquake zones. Its double-walled, cubic structure is characteristic. The installation takes place on a flat, load-bearing surface. The KTD-FHW can be easily transported using a forklift or crane.

The KTD-FHW is delivered with extensive basic equipment that enables immediate use. Special internal coatings, stainless steel versions, electric heating and a heating register for the use of process heat are available as optional equipment. The KTD-FHW is manufactured according to the general building authority approval Z-38.12-312.

**Advantages of this system**

- Safety: high static strength and double-walled construction with vacuum leak detector
- Storage capacity: optimal space-content ratio thanks to cubic design
- Arrangement of the equipment protected in one of the niches of the tank
- Low investment costs: there is no need for an additional collecting tray, a stable base is sufficient

Technical changes reserved!

material	Permit	documentation	Sheet
Steel S235JR	General building supervisors Approval Z-38.12-312	Test certificate 1-time German	1/3



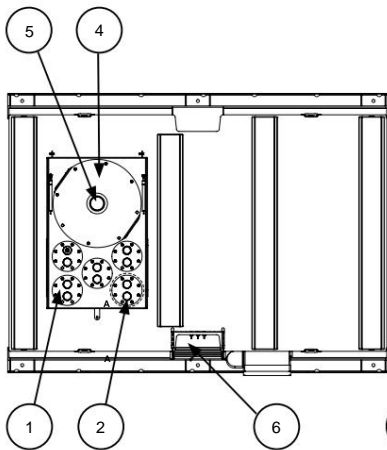
# Kramptitz®



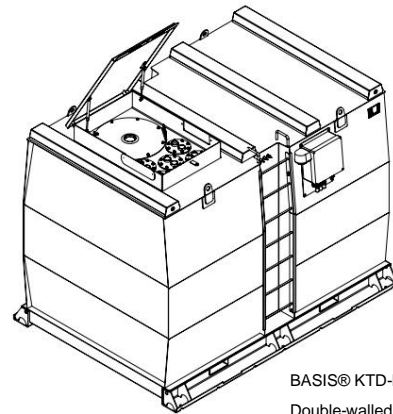
## KTD-FHW-A double-walled storage tank

Tank type	volume 100%	volume 95%	length	length In total	Width	Width In total	Height	Height In total	Weight (empty)
Item No.	liter	liter	mm	mm	mm	mm	mm	mm	kg (approx.)
KTD-FHW-A-5	5,330	5,090	2,000	2,200	1,500	1,900	2,000	2,440	
KTD-FHW-A-7	7280	6950	2000	2020	2000	2220	2000	2400	
KTD-FHW-A-10	0790	10280	3000	3020	2000	2220	2000	2420	2360
KTD-FHW-A-15	14590	13910	4000	4030	2000	2220	2000	2400	
KTD-FHW-A-20	20000	19050	5500	5530	2000	2220	2000	2400	

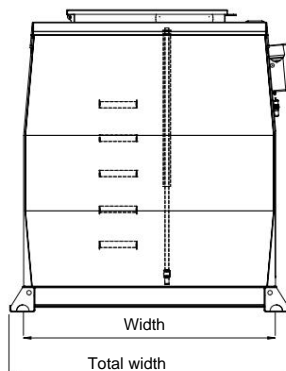
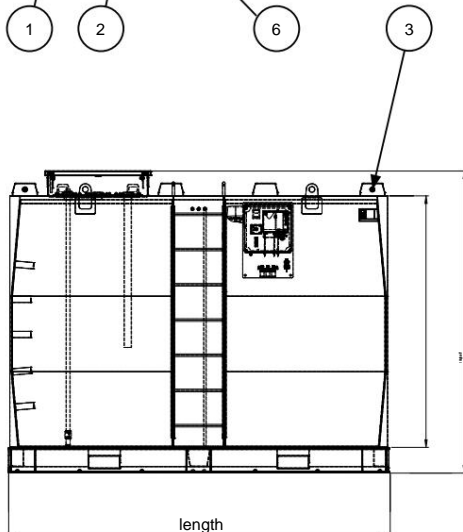
Please note: Transport only when empty and cleaned!



- 1.) Flange DN 160
- 2.) Sleeve 2"
- 3.) Multifix point
- 4.) Inspection opening
- 5.) Burst protection
- 6.) Vacuum leak detector  
(Electronic or static)



BASIS® KTD-FHW-A-10.000-D  
Double-walled storage tank



### Standard equipment:

- 1.) Floor assembly with continuous longitudinal beams and integrated forklift pockets
- 2.) Robust, cubic, double-walled steel body S235 JR
- 3.) Promotion ladder from 10,000 liters. (Climb rungs mounted in one of the outer stiffening niches) including 2 grab handles on the tank roof
- 4.) 4 heavy-duty crane eyes for lifting when empty (up to 5000 liters two crane eyes)
- 5.) Hood element, consisting of:
  - Frame including lid
  - 2 pipe bushings 300 x 100 mm with blind plate (incl. screws, washers, nuts)
  - Gas pressure damper, padlock
- 6.) Roof assembly consisting of:
  - Dome entry DN 600 with dome cover including washers, nuts
  - Foam rubber square profile 8 x 12 mm, self-adhesive
- 7.) Entry steps in the tank for inspection
- 8.) Nameplate
- 9.) Burst protection 115
- 10.) 5 connection flanges for flange adapter DN 160 (AØ 240)
  - 5 flange adapters with 2 2" sleeves each

### Corrosion protection:

- Inside: raw, oiled
- Exterior: LA-1 coating, RAL 7032

### Accessories optional:

- Additional level sensors
- Overfill protection with horn and flashing light
- Filters, pumps, electric tank heater
- System control with additional functions
- Equipment for media flash point < 55°C
- Equipment for special media

### Special equipment:

- Painting in all RAL colors
- Interior coatings

Technical changes reserved!

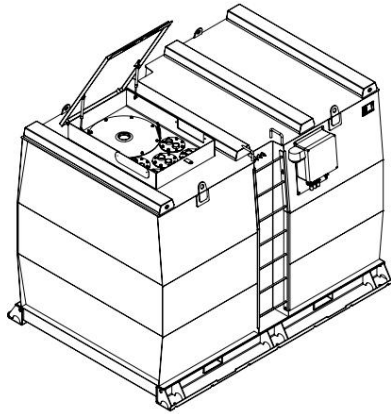
material	Permit	documentation	Sheet
Steel S235JR	General building supervisors Approval Z-38.12-312	Test certificate 1-time German	2/3



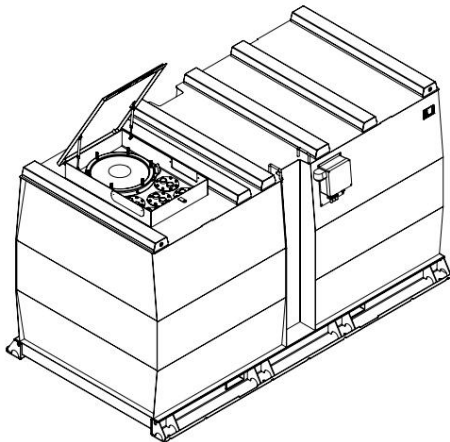
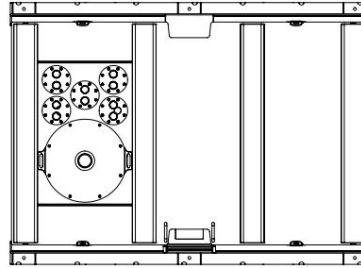
**Krampitz**



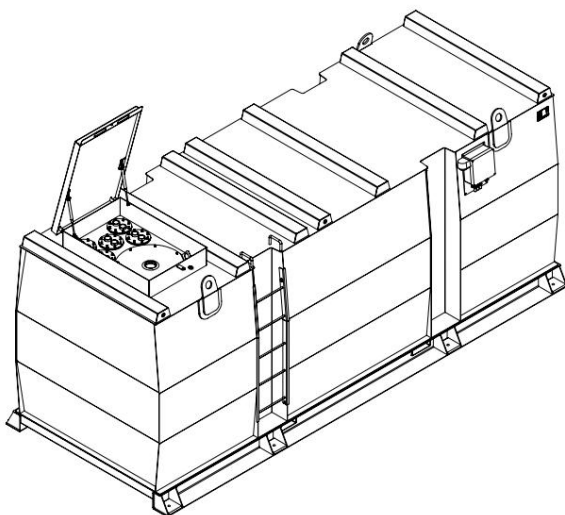
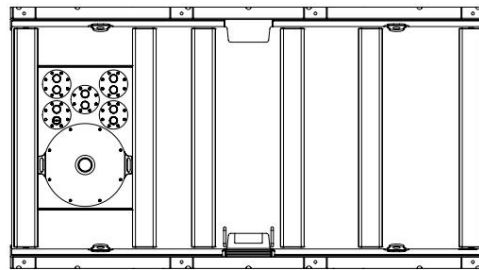
# KTD-FHW-A double-walled storage tank



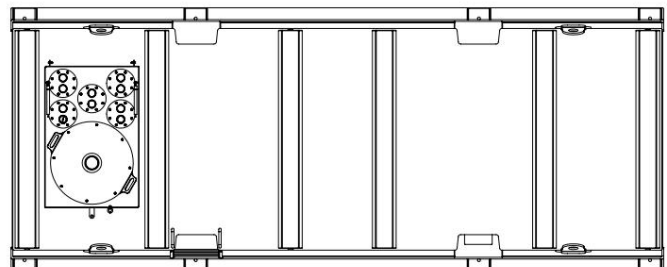
**KTD-FHW-A-10**



**KTD-FHW-A-15**



**KTD-FHW-A-20**



Technical changes reserved!

material	Permit	documentation	Sheet
Steel S235JR	General building supervisors Approval Z-38.12-312	Test certificate 1-time German	3/3