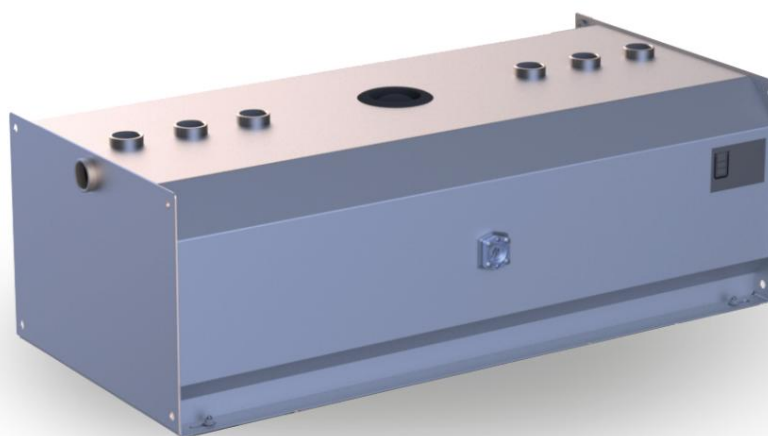


model series **TTE-A-DB** Product data sheet - as of 09.2023  
**Single-walled day tank**



Characteristic	Area of application / media		Transport / installation	
<b>E1</b> single-walled	<b>E12</b> hazardous to groundwater	<b>E19</b> Flash point >55°C	<b>E3</b> cleaned and transportable	<b>E9</b> Interior use



The TTE-A-DB serves as a day tank for supplying units with fuel or lubricating oil. The TTE-A-DB is also referred to as a template tank. Due to its structure and features, it meets the requirements for use in emergency power systems in accordance with VDE 107/108. It is suitable for installation in buildings as well as in system containers.

be trained. If there is no collection space available on site, a collection tray must be used. The cubic design of the TTE-A-DB guarantees optimal use of space.

Special dimensions in length, width and height can be easily implemented. The only limits are the approval and transportability.

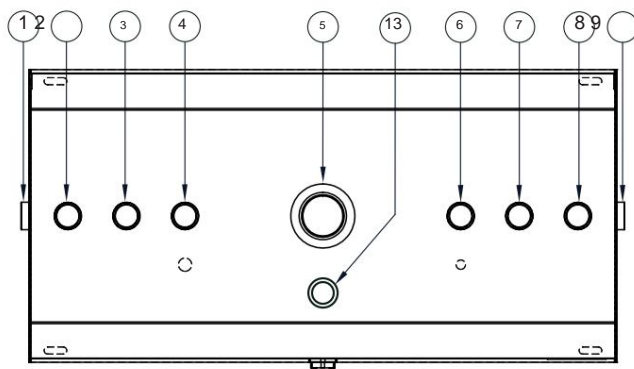
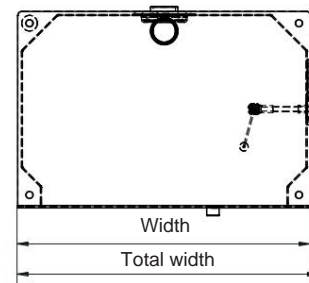
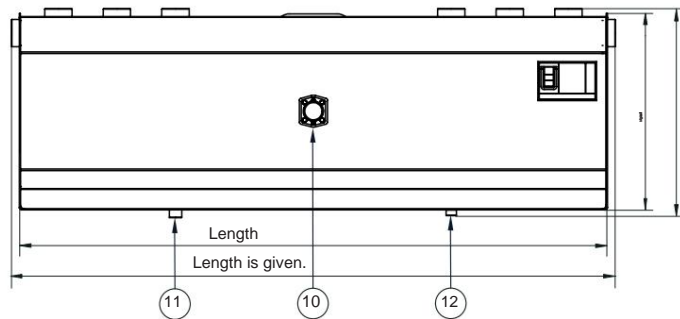
The installation area must be level, load-bearing and a collecting tray

designation	Volume 100 %	Volume 95 %	Long	Long in total	Width	Width in total	Height	Height in total	Weight
	l	l	mm	mm	mm	mm	mm	mm	kg
<b>TTE-A-100-DB</b>	106	100	510	550	500	525	505	530	38
<b>TTE-A-250-DB</b>	265	250	1.260	1.300	500	525	505	530	78
<b>TTE-A-500-DB</b>	500	470	1.510	1.550	750	775	505	530	115
<b>TTE-A-750-DB</b>	770	730	1.510	1.550	750	775	755	780	153
<b>TTE-A-990-DB</b>	1.020	980	2.010	2.050	750	775	755	780	192
<b>TTE-A-1500-DB</b>	1.870	1.790	2.010	2.050	1.000	1.000	1.005	1.030	336
<b>TTE-A-1950-DB</b>	2.370	2.260	2.010	2.050	1.250	1.250	1.005	1.030	428

material	Permit	Documentation	Blatt
Steel S235JR	General building supervisors Approval Z-38.11-86	Test certificate 1x German	1 of 2



# Krampitz



### Nozzle table

#### Pos. Nominal diameter connection

1 / 9	Sleeve G2"	overflow
2	Socket G2"	filling
3	Socket G2"	Level stabl
4	Socket G2"	Reserve
5	Ø 115 mm	burst protection
6	Socket G2"	Reserve
7	Socket G2"	Rewind
8	Socket G2"	Venting
10	flange	Float content display front (up to TTE-A-900-DB)
11	Sleeve G 3/4"	feed
12	socket G 1/2"	residual emptying
13	Sleeve G2"	Float content display roof (from TTE-A-1500-DB)

#### Standard equipment:

- Burst protection
- Connection sleeves according to the connection table
- Float content display - Nameplate
- Dust caps

#### Accessory package:

- Ventilation port 2" with hood
- Flow 3/4", ball valve 3/4", angle 90° 3/4"
- Residual emptying 1/2" with KFE tap 1/2"
- Reduction 2" x 3/4" (2x), Reduction 2" x 1" (2x)
- Blindstopfen 2" (4x) / Krampitz Sealfix 10 ml

#### Accessories optional:

- Collection tray type TW-A
- Wall bracket type WK-A only up to TTE-A-990-DB
- Foot type FS-A / column type ST-A
- Electronic content display
- Overfill protection / level indicator
- Pump
- Tank heating
- Filling neck with pipe angle 2" 45° and TW connection K, 2"

#### Corrosion protection:

- Exterior: LA-1 paint RAL 7032
- Inside: raw, oiled

#### Special equipment:

- Painting in all RAL colors

Technical changes reserved!

material	Permit	Documentation	Blatt
Steel S235JR	General building supervisors Approval Z-38.11-86	Test certificate 1x German	2 of 2