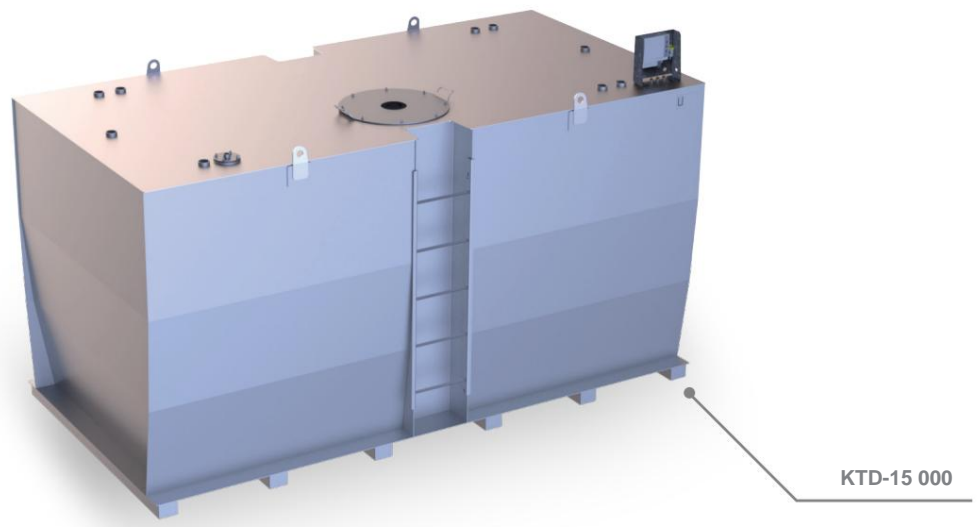


model series Product data sheet - as of 2. 2024

KTD DB **Double-walled storage tank**



Characteristic	Area of application / media				Lineup	
E2 double-walled	E12 basic hazardous to water	E19 Flash point >55°C	E7 Flash point < 55 °C	E3 cleaned and transportable	E9 Interior use	



The KTD is used to store heating oil, diesel, mineral oil (used fresh and lubricating oil) or other water-polluting liquids in accordance with the approval. It is also known as a storage tank. Its double-walled steel structure guarantees the highest safety standards. An additional collecting tray is not required. The cubic design guarantees optimal use of space. The KTD is suitable for installation in buildings as well as in system containers. The installation surface must be level and stable. The KTD can be easily transported using a forklift, pallet truck or crane.

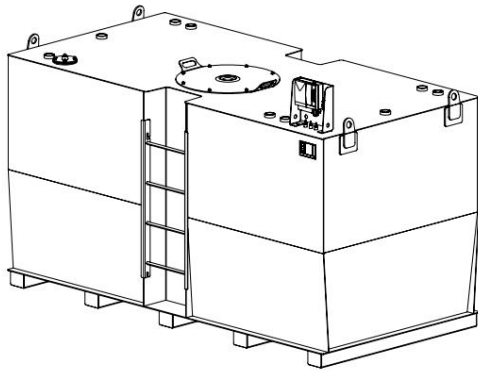
Technical changes reserved!

material	Permit	documentation	Sheet
Steel S235JR	General building supervisors Approval Z-38.12-312	Test certificate 1-time German	1/3

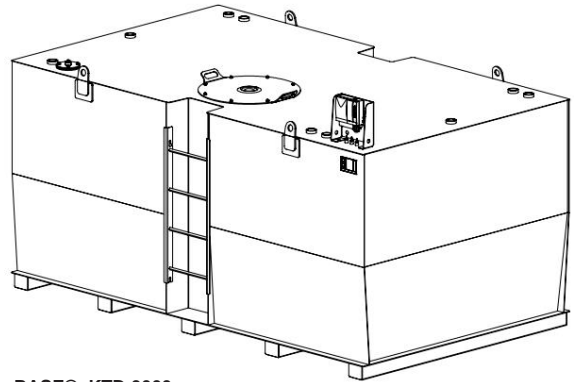


Tank type	volume 100%	volume 95%	length	Width	Width in total	Tank height	Height in total	Weight
Item No.	l	l	mm	mm	mm	mm	mm	kg
KTD-12000	12,500	11,800	3,500	2,000	2,030	2,000	2,450	2,280
KTD-15000	14,300	13,600	4,000	2,000	2,030	2,000	2,450	2,490
KTD-20000	19,800	18,700	5,500	2,000	2,030	2,000	2,450	3,460
KTD-25000	25,100	23,800	7,000	2,000	2,030	2,000	2,450	4,200
KTD-30000	28,900	27,400	8,000	2,000	2,030	2,000	2,450	4,750
KTD-40000	46,000	43,600	10,500	2,400	2,430	2,000	2,450	6,800
KTD-50000	52,600	49,900	12,000	2,400	2,430	2,000	2,450	7,600

Please note: Transport only when empty and cleaned!



BASIS® KTD-6000



BASE® KTD-9000

Standard equipment:

- Preparation for LAZ (with removable console)
- Mechanical content display
- Burst protection
- Dome entry DN 600 - Connection sleeves according to the connection table
- Dust caps
- lifting eyes
- Entry steps in the tank for revision
- Filling pipe 2" screwed in
- Feet (height: 100 mm)
- Type label
- Access ladder outside from KTD-6000
- 1x flange Ø 160 mm with 1" socket

Corrosion protection:

- Exterior: LA-1 RAL 7032
- Inside: raw, oiled

Accessories optional:

- Electric content display
- Overfill protection
- Level indicator
- Pump
- Electric tank heater
- Tubular heating register hot water
- Filling neck 2" with 45° angle and TW connection K, 2"
- Suction pipe 1" with foot valve 1" flanged for removal

Special equipment:

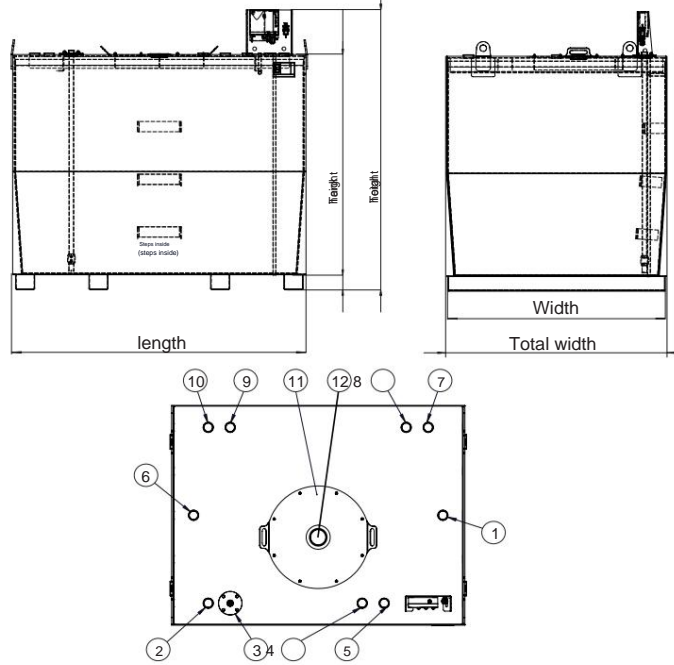
- Painting in all RAL colors

Technical changes reserved!

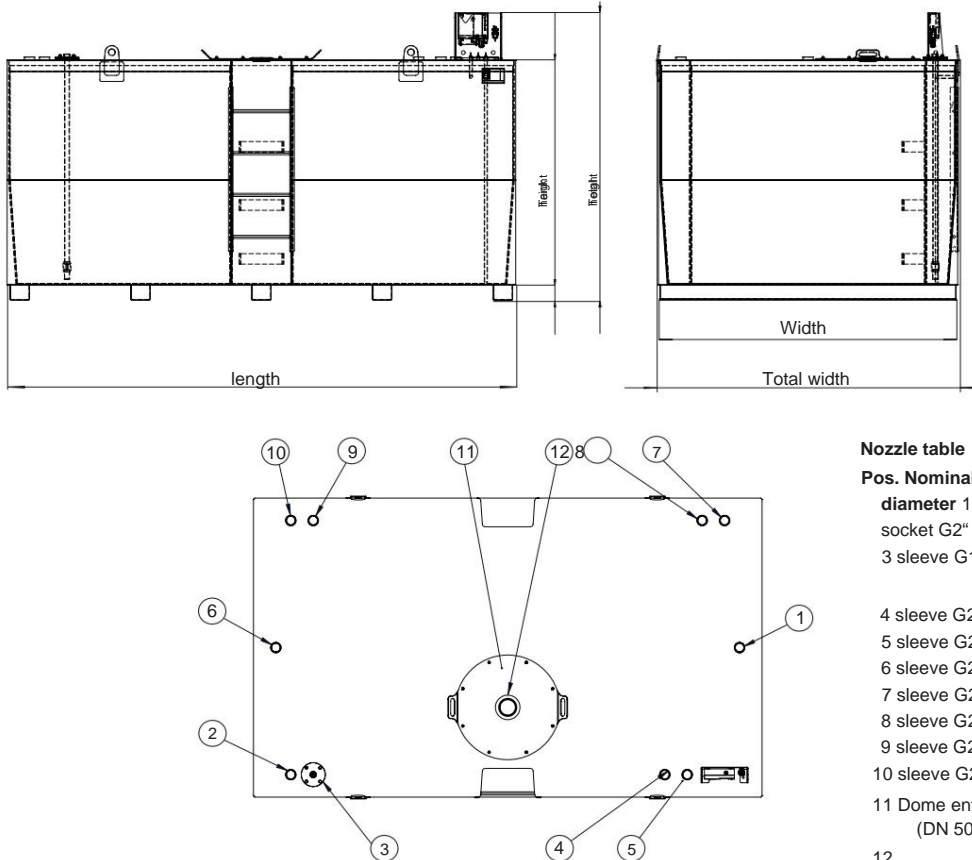
material	Permit	documentation	Sheet
Steel S235JR	General building supervisors Approval Z-38.12-312	Test certificate 1-time German	2/3



BASE® - KTD-4000



BASE® - KTD-9000



Nozzle table

- Pos. Nominal diameter 1 socket G2" 2 socket G2"
- 3 sleeve G1"
- 4 sleeve G2"
- 5 sleeve G2"
- 6 sleeve G2"
- 7 sleeve G2"
- 8 sleeve G2"
- 9 sleeve G2"
- 10 sleeve G2"
- 11 Dome entrance DN 600 (DN 500 for KTD-950)
- 12

Connection

- Venting
- filling
- Removal of 1x flange
- Ø 160 mm with 1" sleeve
- Overfill protection
- Content display
- Rewind
- reserve
- Level indicator
- reserve
- reserve
- Inspection opening
- Burst protection

Technical changes reserved!

material	Permit	documentation	Sheet
Steel S235JR	General building supervisors Approval Z-38.12-312	Test certificate 1-time German	3/3