






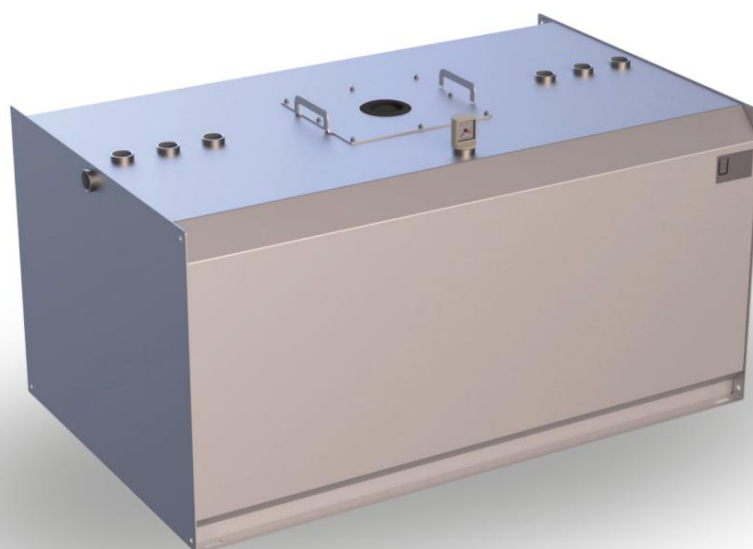


model series	Product data sheet - as of November 11, 2023	
<b>TTE-C-UR</b>	<b>Single-walled day tank (earthquake zone 1-3 Urea)</b>	

Characteristic	Area of application / media			Transport / installation	
					
<b>E1</b> single-walled	<b>E12</b> hazardous to groundwater	<b>E19</b> Flash point >55°C	<b>E14 inside</b> Special coating	<b>E3</b> cleaned and transportable	<b>E9</b> Interior use

# Krampitz



The TTE-C-UR serves as a day tank for supplying aggregates with urea in earthquake zones. The TTE-C-UR is also referred to as a storage tank. Due to its structure and features, it meets the requirements for use in emergency power systems in accordance with VDE 107/108. It is suitable for installation in buildings as well as in system containers. The installation area must

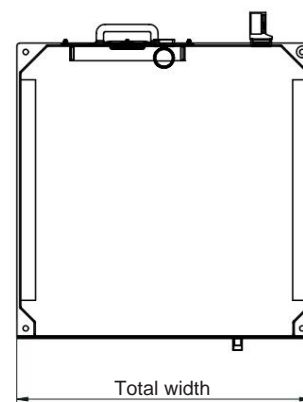
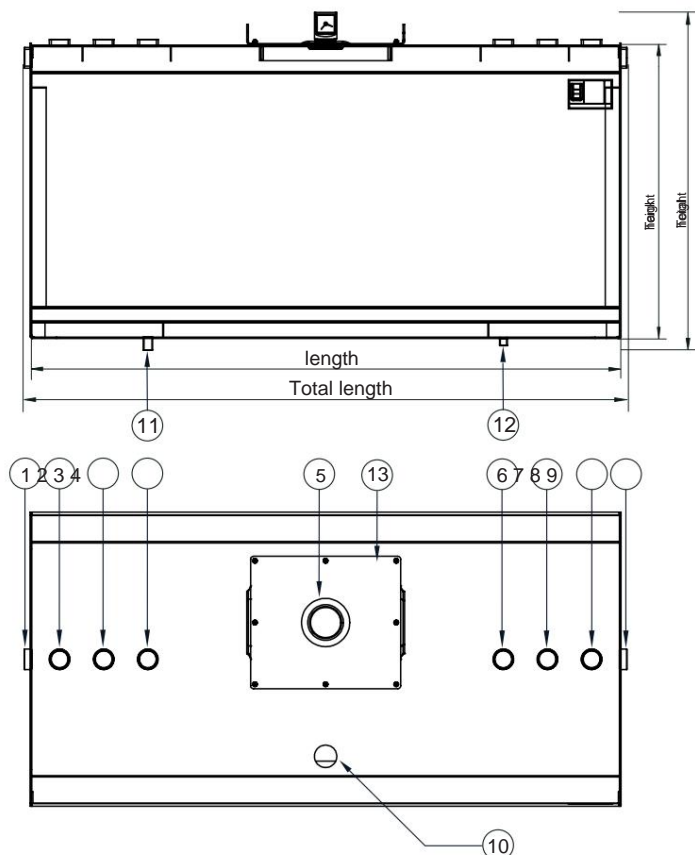
be flat, load-bearing and designed as a collecting tray. If there is no collection space available on site, a collection tray must be used. The cubic design of the TTE-C-UR guarantees optimal use of space. Special dimensions in length, width and height can be easily implemented. The only limits are the approval and transportability.

designation	Volume 100%	Volume 95%	length	length in total	Width	Total width	Height	Height in total	Weight
	l	l	mm	mm	mm	mm	mm	mm	kg
<b>TTE-C-1500-UR</b>	1,870	1,790	2,010	2,050	1,000	1,000	1,005	1,030	336
<b>TTE-C-1950-UR</b>	2,370	2,260	2,010	2,050	1,250	1,250	1,005	1,030	428

material	Permit	documentation	Sheet
Steel S235JR	General building supervisors Approval Z-38.11-86	Test certificate 1x German	1 of 2



# Krampitz

**Standard equipment:**

- Burst protection
- Connection sleeves according to socket table (VA)
- Float content display -
- Nameplate
- Dust caps

**Accessory package:**

- Ventilation connection (VA) 2" with hood (PE)
- Flow (VA) 3/4", ball valve (VA) 3/4", angle (VA) 90° 3/4"
- Residual emptying (VA) 1/2" with KFE tap (VA) 1/2"
- Reduction (VA) 2" x 3/4" (2x), Reduction (VA) 2" x 1" (2x)
- Blind plug (VA) 2" (4x) / Krampitz Sealfix 10 ml

**Accessories optional:**

- Collection tray type TW-C
- Foot type FS-C / column type ST-C
- Electronic content display
- Overfill protection / level indicator
- Filling neck with angle (VA) 2" 45° and TW connection VK 50 (VA)

**Corrosion protection:**

- Exterior: LA-1 paint RAL 7032
- Inside: LI-2-UR

**Special equipment:**

- Painting in all RAL colors

**Nozzle table****Pos. Nominal diameter connection**

1 / 9 sleeve G2"	overflow
2 Sleeve G2"	filling
3 Sleeve G2"	Level indicator
4 sleeve G2"	reserve
5 Ø 115 mm burst protection	
6 Sleeve G2"	reserve
7 Sleeve G2"	Rewind
8 Sleeve G2"	Venting
10 sleeve G2"	Content display
11 Sleeve G 3/4" feed	
12 socket G 1/2" residual emptying	
13 390 x 450mm inspection opening	

Technical changes reserved!

material	Permit	documentation	Sheet
Steel S235JR	General building supervisors Approval Z-38.11-86	Test certificate 1x German	2 of 2