

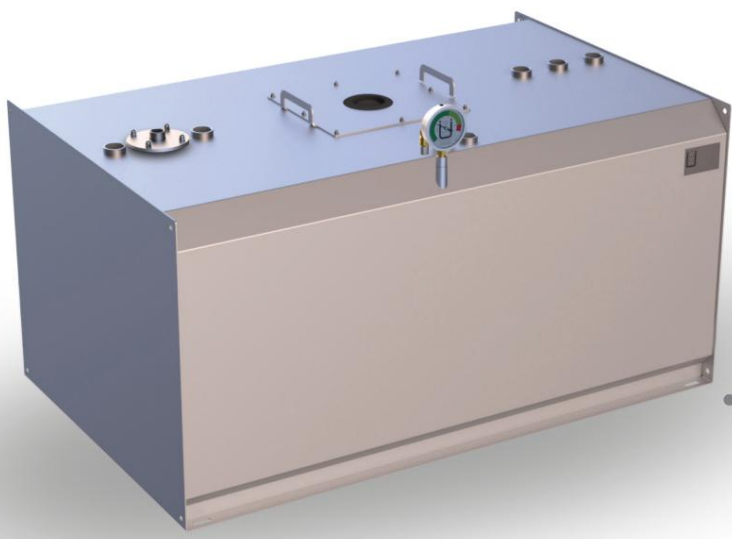
model series **TTD-DB-01** Product data sheet - as of April 4, 2024
Day tank double-walled



Krampitz



Characteristic	Area of application / media			Transport / Installation	
E2 double-walled	E12 hazardous to groundwater	E19 Flash point >55°C	E3 cleaned transportable	E9 Interior use	



TTD-1500-DB-01

The TTD-DB serves as a day tank for supplying units with fuel or lubricating oil. It is also referred to as a storage tank. This tank is suitable for installation in buildings as well as in plant containers. Due to its double-walled construction, no collecting tray is required on site.

The installation surface must be level and stable. The cubic design of the TTD-DB guarantees optimal use of space. If necessary, the dimensions can be changed within the maximum values as shown in the table below. The only limits are the approval and the transportability.

designation	Volume 100%	Volume 95%	length	length in total	Width	Height	Height in total	Weight
	l	l	mm	mm	mm	mm	mm	kg
TTD-250-DB-01	245	230	1,260	1 280	500	505	630	133
TTD-500-DB-01	470	440	1 510	1,530	750	505	630	186
TTD-750-DB-01	730	700	1 510	1 530	750	755	880	248
TTD-990-DB-01	975	940	2 010	2,030	750	755	880	316
TTD-1500-DB-01	1,800	1 730	2 010	2,030	1,000	1 005	1 130	524
TTD-1950-DB-01	2,300	2 190	2,010	2,030	1,250	1,005	1 130	658

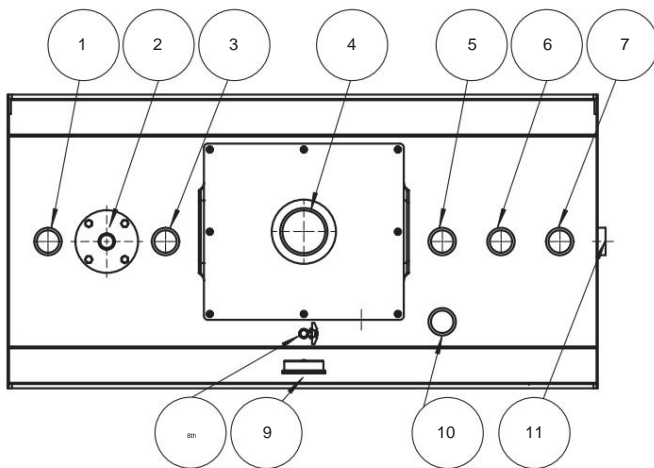
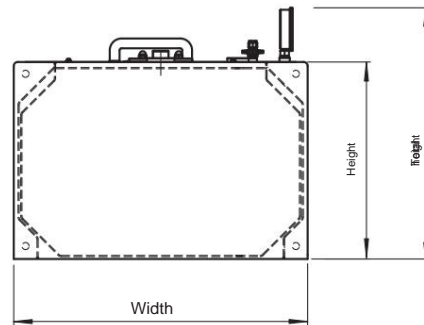
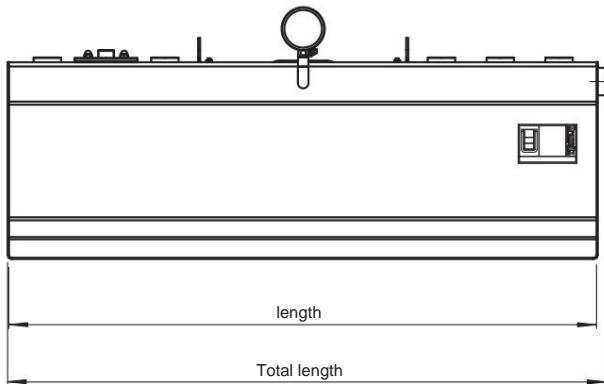
material	Permit	documentation	Sheet
Steel S235JR	General building supervisors Approval Z-38.12-23	Test certificate 1-time German	1 of 2

TTD-DB-01

Double-walled day tank



Krampitz



Nozzle table

Pos. Connection

- | | |
|----|--|
| 1 | Filling socket G 2" |
| 2 | Removal of flange Ø 160 mm, sleeve 1" |
| 3 | Reserve sleeve G 2" |
| 4 | Burst protection Ø 115 mm,
Inspection opening 380x440 mm (from TTD-500-DB-01) |
| 5 | Reserve G 2" |
| 6 | Reserve G 2" |
| 7 | Reserve G 2" |
| 8 | Measuring supports 3/8" with ball valve |
| 9 | Static vacuum leak detector (KÜR 5) |
| 10 | Content display |
| 11 | Overflow G2" |

Corrosion protection:

- Outside: LA-1 paint RAL 7032
- Inside: raw, oiled

Special equipment:

- Painting in other RAL colors
- Material: Stainless steel 1.4571
- Interior coatings (from TTD-500-DB-01)

Standard equipment:

- static vacuum leak detector type KÜR-5
- Burst protection
- Connection sleeves according to the connection table
- Type label
- Dust caps
- mechanical content display

Accessories optional:

- Wall bracket type WK-A
- Foot type FS-A
- Stand column type ST-A
- mechanical/electronic content display
- Overfill protection
- Level sensor
- Pump
- Tank heating
- Filling nozzle with pipe angle 2", 130° and TW connection K, 2"
- Suction pipe with foot valve 1" flanged
- Ventilation port 2" with hood

Technical changes reserved!

material	Permit	documentation	Sheet
Steel S235JR	General Building Inspection Approval Z-38.12-23	Test certificate 1-fold German	2 of 2