

model series Product data sheet - as of 04. 2024

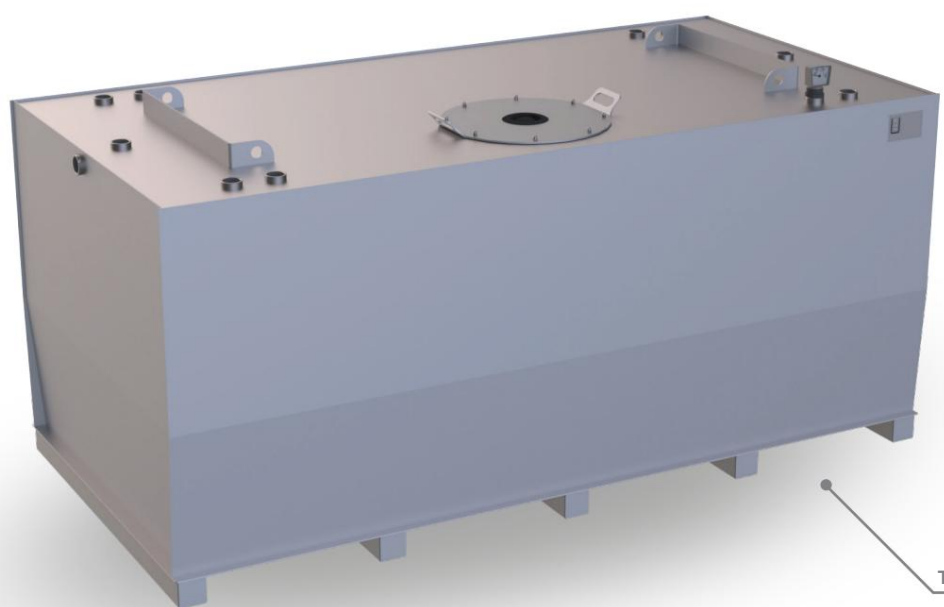
TTE-XL-DB-01 Single-walled day tank XL



Krampitz



Characteristic	Area of application / media			Transport / Installation	
E1 single-walled	E12 hazardous to groundwater	E19 Flash point >55°C	E3 cleaned transportable	E9 Interior use	



TTE-XL-5000-DB-01

The TTE-XL serves as a day tank for supplying units with fuel or lubricating oil. Due to its design and equipment, the tank meets the requirements for use in emergency power systems in accordance with VDE 107/108. Due to its volume, the TTE-XL can also function as a storage tank. It is suitable for installation in buildings as well as in system containers.

The installation surface must be level, stable and designed as a collecting tray. If there is no collecting space on site, a collecting tray must be used. The cubic design of the TTE-XL guarantees optimal use of space. Special dimensions in length, width and height can be implemented without any problem.

The only limit here is the transportability.

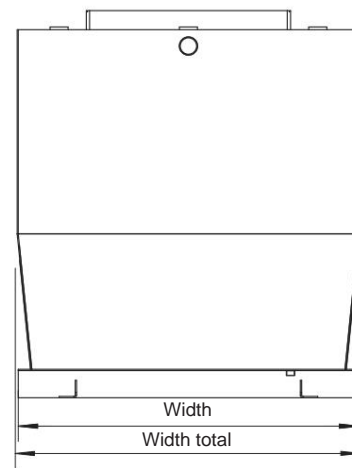
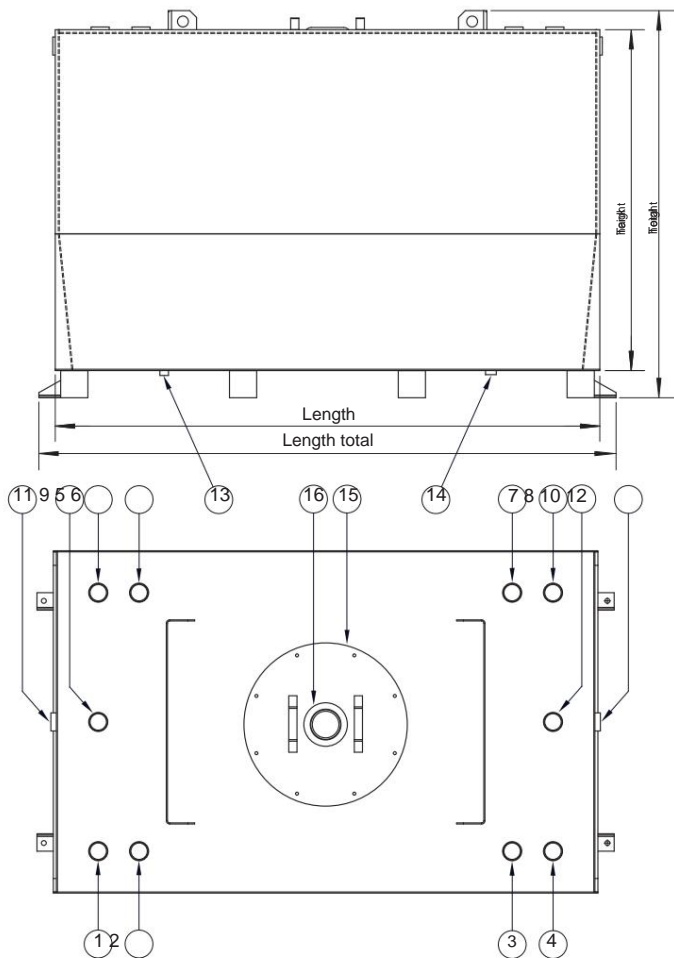
designation	volume 100%	volume 95%	length	length in total	Width	Width in total	Height	Height in total	Weight
	l	l	mm	mm	mm	mm	mm	mm	kg
TTE-XL-2500-DB-01	2,900	2,800	2,000	2.135	1,250	1,260	1,250	1,450	530
TTE-XL-3000-DB-01	3,400	3,300	2,000	2.135	1,500	1,510	1,250	1,450	595
TTE-XL-4000-DB-01	4,200	3,950	2,000	2.135	1,500	1,510	1,500	1,700	660
TTE-XL-5000-DB-01	5,300	5,000	3,000	3,135	1,500	1,510	1,250	1,450	810

material	Permit	documentation	Sheet
Steel S235JR	General Building Inspection Approval Z-38.11-127	Test certificate 1-fold German	1 of 2

TTE-XL-DB-01 Day tank single-walled XL



Krampitz

**Standard equipment: -**

- Bursting protection
- Dome entry DN 600 / crane eyes -
- Connection sleeves according to nozzle table
- Entry steps in the tank for revision
- Float content display
- Filling pipe 2" / type plate
- Dust caps

Accessory pack

- Vent nozzle 2" with hood
- Flow 1", ball valve 1", angle 90° 1"
- Residual drain 1/2" with fill and drain cock 1/2"
- Reduction 2" x 3/4" (2x), Reduction 2" x 1" (2x)
- Blind plug 2" (4x) / Krampitz Sealfix 10 ml

Accessories optional:

- Collection tray type TW-XL
- Stand column special
- Electronic content display -
- Overflow protection/level indicator
- Pumps / tank heating
- Filling neck with pipe angle 2", 45° and TW connection K, 2"

Corrosion protection:

- Exterior: LA-1 paint RAL 7032
- Inside: raw, oiled

Special equipment:

- Painting in other RAL colors
- Internal coating

Nozzle table**Pos. Nominal diameter Connection**

1 sleeve G2 filling / filling pipe	9 Sleeve G2 reserve
2 sleeve G2 reserve	10 Sleeve G2 return
3 Sleeve G2 limit switch	11 Sleeve G2 overflow
4 Sleeve G2 Float level indicator	12 Socket G2 overflow
5 Sleeve G2 ventilation	13 Sleeve G1 flow
6 sleeve G2 level sensor	14 Socket G1/2 residual drainage
7 sleeve G2 reserve	15 DN 600 Dome entry
8 Sleeve G2 overflow protection	16 Ø 115 mm burst protection

Technical changes reserved!

material	Permit	documentation	Sheet
Steel S235JR	General building approval Z-38.11-127	Test certificate 1-time German	2 of 2