

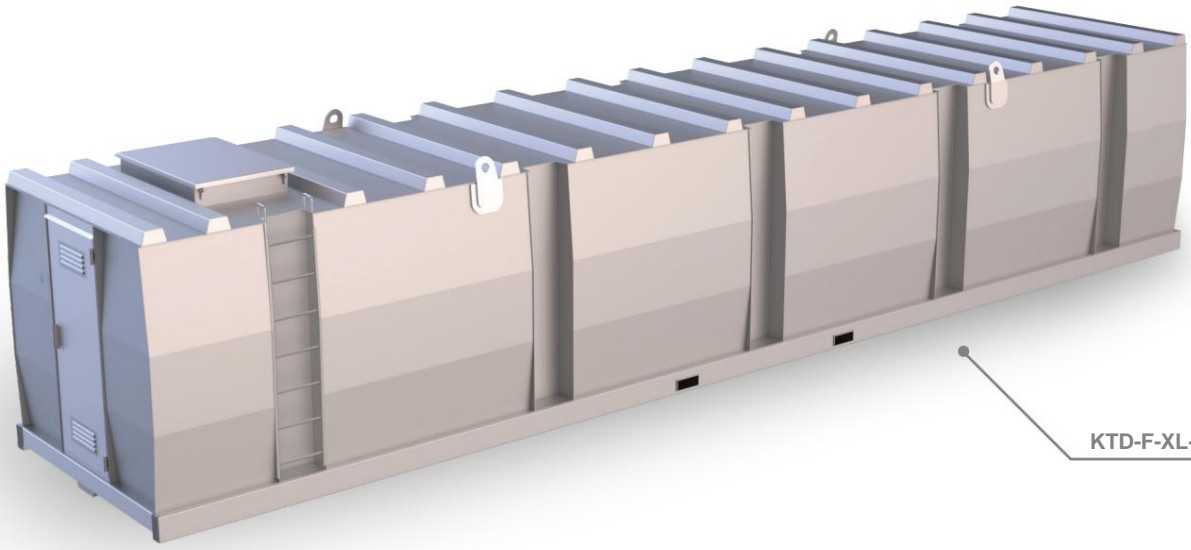
Series **KTD-F-XL-AA \*** Product data sheet - Version 5.2025  
**Double-walled storage tank - outdoor installation**



**Krampitz**



Characteristic	Area of application / Media				Lineup
<b>E2</b> double-walled	<b>E12 Basic</b> hazardous to water	<b>E19</b> Flash point >55°C	<b>E3 cleaned,</b> portable	<b>E8</b> Field deployment	



KTD-F-XL-A-50-A

\* corresponds to KTD-F in approval Z-38.12-312 Annex 3 Page 1/3

The KTD-F-XL is designed for storing water-polluting substances such as heating oil, diesel, mineral oil, and process water, as well as substances listed in the material resistance list for approval. It is intended for outdoor installation. Its defining feature is its double-walled, cubic construction. Installation requires a level, load-bearing surface. The KTD-F-XL can be easily transported using a forklift, pallet jack, or crane.

The KTD-F-XL is supplied with a comprehensive standard equipment package, enabling immediate use. Optional features include special internal coatings, stainless steel construction, thermal insulation, electric heating, or a heating coil for process heat utilization. The KTD-F-XL is manufactured according to the general building authority approval Z-38.12-312 **and must be equipped with a vacuum leak detector.**

**Advantages of this system**

- include:**
- Safety: high static strength and double-walled construction with vacuum leak detector
  - Storage capacity: optimal space-to-volume ratio thanks to cubic design
  - Equipment arranged in a protected location within one of the tank's niches
  - Low investment costs: no additional drip tray is required, a load-bearing surface is sufficient
  - Sealing the tank openings with a cover to protect against weather and vandalism

Technical specifications subject to change without notice.

material	Permit	documentation	Sheet
Steel S235JR	General building regulations Approval Z-38.12-312	Certificate of competence (1x German)	1/3

Series Product data sheet - Version 5.2025

**KTD-F-XL-AA \*** Double-walled storage tank - outdoor installation

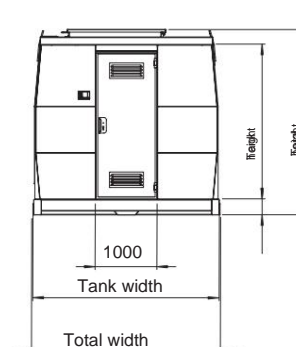
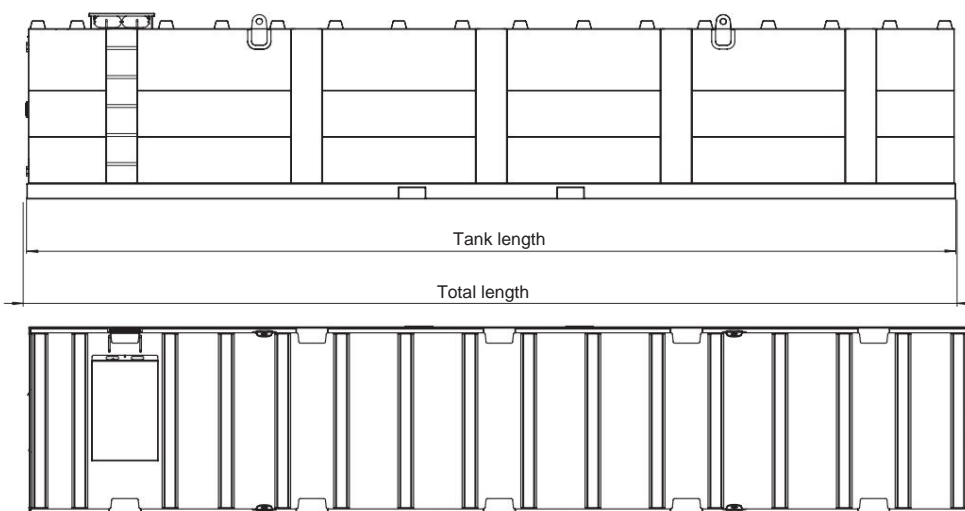


**Kramplitz**



Tank type	volume 100%	volume 95%	length	length in total	Width	Width in total	Height	Height in total	Weight (empty)
Item No.	liter	liter	mm	mm	mm	mm	mm	mm	kg (approx.)
<b>KTD-F-XL-A-50-A</b> 51.250		48,790	11,970	12,010	2,370	2,420	2,000	2,410	8,320
<b>KTD-F-XL-A-60-A</b> 65.420		62,250	11,970	12,010	2,970	3,020	2,000	2,410	9,500
<b>KTD-F-XL-A-75-A</b> 79.380		75,640	11,970	12,010	2,970	3,020	2,500	2,900	11,220
<b>KTD-F-XL-A-96-A</b> 100,010 95,280			14,970	15,010	2,970	3,020	2,500	2,900	13,520

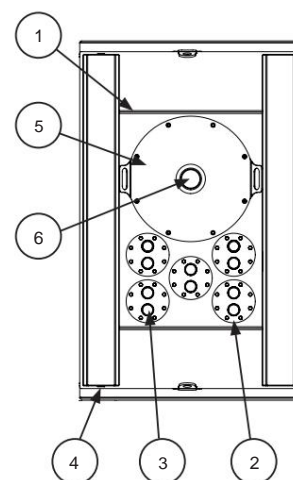
**Please note:** Transport only when empty and clean!



**Standard equipment:**

- Floor assembly with continuous longitudinal beams and integrated forklift pockets
- Robust, cubic, double-walled body made of S235JR steel
- Access ladder (climbing rungs mounted in one of the outer stiffening niches) including 2 handrails on the tank roof
- 4 heavy-duty crane eyes for lifting when empty
- Hood element, consisting of:
  - Frame including lid
  - 2 pipe penetrations 300 x 100 mm with blanking plate (incl. screws, washers, nuts)
  - Gas spring, padlock
- Roof assembly consisting of:
  - Dome access DN 600 with dome cover
  - incl. screws, washers, nuts
  - Foam rubber square profile 8 x 12 mm, self-adhesive
- Functional niche, front side with exclusive locking door (optional) Width - 1,000 mm, Depth - 500 mm, Height - 2,000 mm
- Entry steps in the tank for overhaul
- Type plate
- Burst protection 115 mm
- 5 connection flanges for flange adapter DN 160 (AØ 240)
- 5 flange adapters, each with 2 sockets 2"

- 1.) Hood element
- 2.) Flange DN 160
- 3.) Sleeve 2"
- 4.) Multifix point
- 5.) Revision opening
- 6.) Burst protection



**Corrosion protection:**

- Interior: raw, oiled
- Exterior: Coating LA-3, RAL 7032

**Optional accessories:**

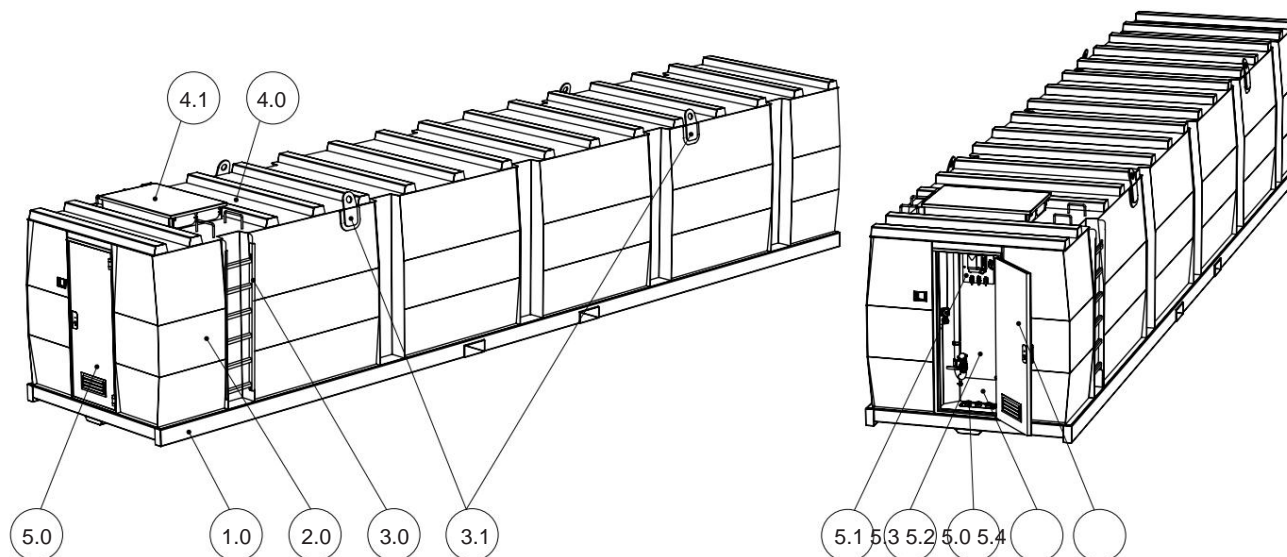
- Additional level sensors
- Overfill protection with horn and flashing light
- Filters, pumps, electric tank heater
- Equipment for special media >55°C

**Special equipment:**

- Painting in other RAL colors
- Inner coating

Technical specifications subject to change without notice.

material	Permit	documentation	Sheet
Steel S235JR	General building regulations Approval Z-38.12-312	Certificate (1x) German	2/3



#### Standard equipment:

- 1.0 Floor assembly with continuous longitudinal beams and integrated forklift pockets
- 2.0 Robust, cubic, double-walled body made of S235JR steel
- 3.0 Ascent ladder (ascent rungs mounted in one of the external stiffening niches) including 2x grab handles on the tank roof
- 3.1 Heavy-duty crane eyes for lifting when empty
- 4.0 Tank roof (self-supporting, single-walled construction)
- 4.1 Hood element mounted on tank roof, consisting of:
  - Cover with gas spring and handle
  - Dome entry DN 600
  - Connection interfaces (sleeve 2")
- 5.0 Functional niche front side  
Dimensions: Width - 1000 mm, Depth - 500 mm, Height - 2000 mm  
consisting of:
- 5.1 Vacuum leak detection device with type approval (not included in the tank price)
- 5.2 Cable penetration in the floor
- 5.3 Mounting plate
- 5.4 Fire door (F30) (optional)

Technical specifications subject to change without notice.

material	Permit	documentation	Sheet
Steel S235JR	General building regulations Approval Z-38.12-312	Certificate of competence (1x German)	3/3